

For Research Use Only

# HN1L Recombinant monoclonal antibody

Catalog Number:87093-1-RR



## Basic Information

<b>Catalog Number:</b> 87093-1-RR	<b>GenBank Accession Number:</b> BC014438	<b>Purification Method:</b> Protein A purification
<b>Source:</b> Rabbit	<b>GeneID (NCBI):</b> 90861	<b>CloneNo.:</b> 252262C12
<b>Isotype:</b> IgG	<b>UNIPROT ID:</b> Q9H910	<b>Recommended Dilutions:</b> WB: 1:5000-1:50000
<b>Immunogen Catalog Number:</b> AG9400	<b>Full Name:</b> hematological and neurological expressed 1-like	
	<b>Calculated MW:</b> 190 aa, 20 kDa	
	<b>Observed MW:</b> 20 kDa	

## Applications

<b>Tested Applications:</b> WB, ELISA	<b>Positive Controls:</b> WB : HeLa cells, A549 cells, Jurkat cells, HEK-293 cells
<b>Species Specificity:</b> human	

## Background Information

Hematological and neurological expressed 1-like protein (HN1L), also known as Jupiter microtubule-associated homolog 2 (JPT2), belongs to the jupiter family. HN1L is nicotinic acid adenine dinucleotide phosphate (NAADP) binding protein required for NAADP-evoked intracellular calcium release (PubMed:33758061). HN1L enables NAADP to activate Ca<sup>2+</sup> release from the endoplasmic reticulum through ryanodine receptors (PubMed:33758062). HN1L was also required for the translocation of a severe acute respiratory syndrome coronavirus 2 (SARS-CoV-2) pseudovirus through the endolysosomal system HN1L is expressed in liver, kidney, prostate, testis and uterus (PMID: 15094197).

## Storage

**Storage:**  
Store at -20°C. Stable for one year after shipment.  
**Storage Buffer:**  
PBS with 0.02% sodium azide and 50% glycerol, pH7.3  
Aliquoting is unnecessary for -20°C storage

For technical support and original validation data for this product please contact:

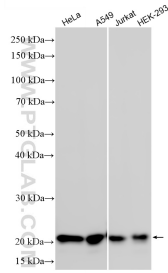
T: 4006900926

E: Proteintech-CN@ptglab.com

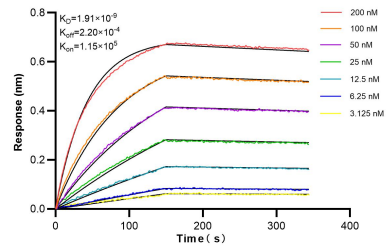
W: ptgcn.com

This product is exclusively available under Proteintech Group brand and is not available to purchase from any other manufacturer.

## Selected Validation Data



Various lysates were subjected to SDS PAGE followed by western blot with 87093-1-RR (HN1L antibody) at dilution of 1:10000 incubated at room temperature for 1.5 hours.



Biolayer interferometry (BLI) kinetic assays of 87093-1-RR against Human HN1L were performed. The affinity constant is 1.91 nM.