

For Research Use Only

KIF3C Recombinant monoclonal antibody

Catalog Number:87075-1-RR



Basic Information

Catalog Number:

87075-1-RR

Source:

Rabbit

Isotype:

IgG

Immunogen Catalog Number:

AG5619

GenBank Accession Number:

BC042486

GeneID (NCBI):

3797

UNIPROT ID:

O14782

Full Name:

kinesin family member 3C

Calculated MW:

89 kDa

Observed MW:

100 kDa

Purification Method:

Protein A purification

CloneNo.:

252142C8

Recommended Dilutions:

WB: 1:2000-1:10000

Applications

Tested Applications:

WB, ELISA

Species Specificity:

human, mouse

Positive Controls:

WB : HeLa cells, K-562 cells, SW480 cells, HepG2 cells, Y79 cells, mouse brain tissue

Background Information

KIF3C(Kinesin Family Member 3C) is a member of Kinesin-2 family, which belongs to microtubule-dependent motor protein. It can generate mechanical energy by hydrolyzing ATP, and regulate many processes such as intracellular transport, cytoskeleton dynamics, cell division and migration. It plays an important role in nervous system, tumor and other tissues, and has gradually become a hot target of cancer and neurodegenerative diseases in recent years.

Storage

Storage:

Store at -20°C. Stable for one year after shipment.

Storage Buffer:

PBS with 0.02% sodium azide and 50% glycerol, pH7.3

Aliquoting is unnecessary for -20°C storage

For technical support and original validation data for this product please contact:

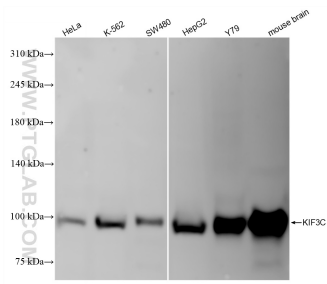
T: 4006900926

E: Proteintech-CN@ptglab.com

W: ptgcn.com

This product is exclusively available under Proteintech Group brand and is not available to purchase from any other manufacturer.

Selected Validation Data



Various lysates were subjected to SDS PAGE followed by western blot with 87075-1-RR (KIF3C antibody) at dilution of 1:5000 incubated at room temperature for 1.5 hours.