

For Research Use Only

# SCRIB Recombinant monoclonal antibody

Catalog Number:87069-3-RR



## Basic Information

<b>Catalog Number:</b> 87069-3-RR	<b>GenBank Accession Number:</b> NM_015356.4	<b>Purification Method:</b> Protein A purification
<b>Source:</b> Rabbit	<b>GeneID (NCBI):</b> 23513	<b>CloneNo.:</b> 252246F10
<b>Isotype:</b> IgG	<b>UNIPROT ID:</b> Q14160	<b>Recommended Dilutions:</b> WB: 1:5000-1:50000
<b>Immunogen Catalog Number:</b> EG6543	<b>Full Name:</b> scribbled homolog (Drosophila)	
	<b>Calculated MW:</b> 175 kDa	
	<b>Observed MW:</b> 260 kDa	

## Applications

<b>Tested Applications:</b> WB, ELISA	<b>Positive Controls:</b> WB : HeLa cells, HCT 116 cells, SKOV-3 cells, MCF-7 cells, PC-3 cells, NIH/3T3 cells, HSC-T6 cells
<b>Species Specificity:</b> human, mouse, rat	

## Background Information

SCRIB encodes a large, 260-kDa cytoplasmic scaffolding protein that comprises a large leucine-rich repeat (LRR) region and 4 PDZ domains that regulate protein-protein interactions. In mammals, cell polarity is established and maintained by at least 3 protein modules (Scrib, Crumbs, and Par). The apical (Crumbs and Par) and basolateral (Scrib) modules function in a mutually antagonistic relationship to regulate various polarization processes such as apical-basal polarity, planar cell polarity, asymmetric cell division and migration. The loss of SCRIB in malignant tumors suggest that it has potential to be a tumor suppressor. Alteration of polarity through deletion, downregulation, overexpression, and mislocalization can induce structural and functional alteration of cells that might be related to tumorigenesis. Mislocalization of SCRIB is involved in epithelial-to-mesenchymal transition (EMT) by inducing loss of E-cadherin. Deregulated SCRIB expression induces tumorigenesis in breast and liver. (PMID: 28460446, PMID: 32564009)

## Storage

**Storage:**  
Store at -20°C. Stable for one year after shipment.  
**Storage Buffer:**  
PBS with 0.02% sodium azide and 50% glycerol, pH7.3  
Aliquoting is unnecessary for -20°C storage

For technical support and original validation data for this product please contact:

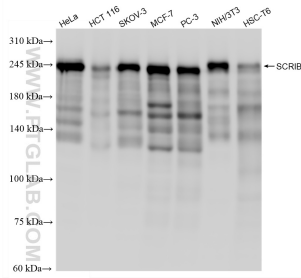
T: 4006900926

E: [Proteintech-CN@ptglab.com](mailto:Proteintech-CN@ptglab.com)

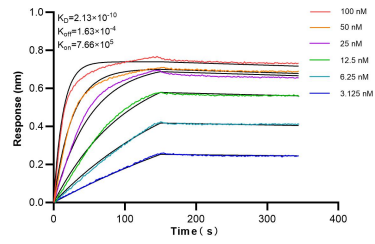
W: [ptgcn.com](http://ptgcn.com)

**This product is exclusively available under Proteintech Group brand and is not available to purchase from any other manufacturer.**

## Selected Validation Data



Various lysates were subjected to SDS PAGE followed by western blot with 87069-3-RR (SCRI B antibody) at dilution of 1:40000 incubated at room temperature for 1.5 hours.



Biolayer interferometry (BLI) kinetic assays of 87069-3-RR against Human SCRI B were performed. The affinity constant is 0.213 nM.