

For Research Use Only

MRE11 Recombinant monoclonal antibody

Catalog Number:87066-3-RR



Basic Information

Catalog Number:

87066-3-RR

Source:

Rabbit

Isotype:

IgG

Immunogen Catalog Number:

AG1105

GenBank Accession Number:

BC005241

GeneID (NCBI):

4361

UNIPROT ID:

P49959

Full Name:

MRE11 meiotic recombination 11 homolog A (*S. cerevisiae*)

Calculated MW:

81 kDa

Observed MW:

81 kDa

Purification Method:

Protein A purification

CloneNo.:

252144G6

Recommended Dilutions:

WB: 1:5000-1:50000

IP: 0.5-4.0 ug for 1.0-3.0 mg of total protein lysate

Applications

Tested Applications:

WB, IP, ELISA

Species Specificity:

human, mouse

Positive Controls:

WB : HeLa cells, HepG2 cells, HEK-293 cells, A431 cells, Jurkat cells, K-562 cells, RAW 264.7 cells

IP : HeLa cells,

Background Information

Mre11 (meiotic recombination 11), also named as Mre11A, is a component of the MRN (MRE11/RAD50/NBS1) complex which is a versatile complex, playing a key role in the sensing, processing, and repair of DSBs. MRE11 possesses both endonuclease and 3'-5' exonuclease activity. It contains two DNA-binding domains (DBDs), enabling it to bind both single-stranded DNA (ssDNA) and double-stranded DNA (dsDNA). After DSBs, MRE11 is loaded onto DSBs sites and cleaves DNA by cooperating with CtIP (CtBP [C terminal binding protein] interacting protein) to initiate end resection. It's reported that MRE11 is over-expressed in breast cancers. (PMID:38128537; 22914783)

Storage

Storage:

Store at -20°C. Stable for one year after shipment.

Storage Buffer:

PBS with 0.02% sodium azide and 50% glycerol, pH7.3

Aliquoting is unnecessary for -20°C storage

For technical support and original validation data for this product please contact:

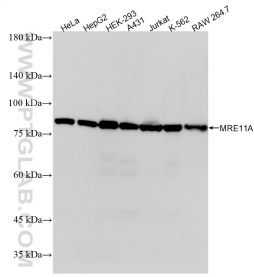
T: 4006900926

E: Proteintech-CN@ptglab.com

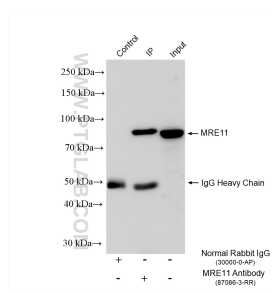
W: ptgcn.com

This product is exclusively available under Proteintech Group brand and is not available to purchase from any other manufacturer.

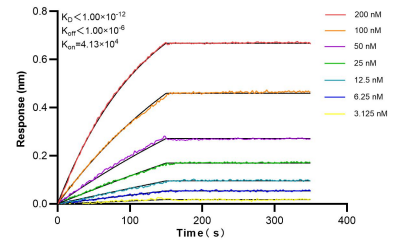
Selected Validation Data



Various lysates were subjected to SDS PAGE followed by western blot with 87066-3-RR (MRE11A antibody) at dilution of 1:10000 incubated at room temperature for 1.5 hours.



IP result of anti-MRE11 (IP:87066-3-RR, 4ug; Detection:87066-3-RR 1:2000) with HeLa cells lysate 1320 ug.



Bi-layer interferometry (BLI) kinetic assays of 87066-3-RR against Human MRE11 were performed. The affinity constant is below 1 pM.