

For Research Use Only

MRE11A Recombinant monoclonal antibody, PBS Only (Capture)

Catalog Number:87066-2-PBS



Basic Information

Catalog Number: 87066-2-PBS	GenBank Accession Number: BC005241	Purification Method: Protein A purification
Source: Rabbit	GeneID (NCBI): 4361	CloneNo.: 252144C9
Isotype: IgG	UNIPROT ID: P49959	
Immunogen Catalog Number: AG1105	Full Name: MRE11 meiotic recombination 11 homolog A (S. cerevisiae)	
	Calculated MW: 81 kDa	

Applications

Tested Applications:
Cytometric bead array, Indirect ELISA

Species Specificity:
human

Background Information

Storage

Storage:
Store at -80°C.
The product is shipped with ice packs. Upon receipt, store it immediately at -80°C

Storage Buffer:
PBS only, pH7.3

For technical support and original validation data for this product please contact:

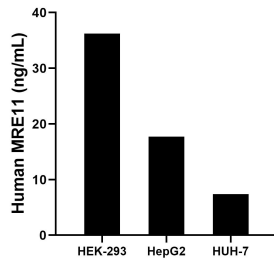
T: 4006900926

E: Proteintech-CN@ptglab.com

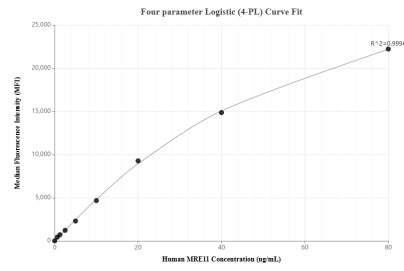
W: ptgcn.com

This product is exclusively available under Proteintech Group brand and is not available to purchase from any other manufacturer.

Selected Validation Data



The mean MRE11 concentration was determined to be 36.2 ng/mL in HEK-293 cell extract based on a 1.2 mg/mL extract load, 17.7 ng/mL in HepG2 cell extract based on a 1.2 mg/mL extract load, 7.4 ng/mL in HUH-7 cell extract based on a 1.2 mg/mL extract load.



Cytometric bead array standard curve of MP02855-1, MRE11 Recombinant Matched Antibody Pair, PBS Only. Capture antibody: 87066-2-PBS. Detection antibody: 87066-1-PBS. Standard: Ag1105. Range: 0.625-80 ng/mL.