

For Research Use Only

MRE11A Recombinant monoclonal antibody, PBS Only (Detector)

Catalog Number:87066-1-PBS



Basic Information

Catalog Number:

87066-1-PBS

Source:

Rabbit

Isotype:

IgG

Immunogen Catalog Number:

AG1105

GenBank Accession Number:

BC005241

GeneID (NCBI):

4361

UNIPROT ID:

P49959

Full Name:

MRE11 meiotic recombination 11 homolog A (S. cerevisiae)

Calculated MW:

81 kDa

Purification Method:

Protein A purification

CloneNo.:

252144G3

Applications

Tested Applications:

Cytometric bead array, Indirect ELISA

Species Specificity:

human

Background Information

Storage

Storage:

Store at -80°C.

The product is shipped with ice packs. Upon receipt, store it immediately at -80°C

Storage Buffer:

PBS only, pH7.3

For technical support and original validation data for this product please contact:

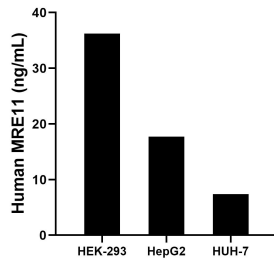
T: 4006900926

E: Proteintech-CN@ptglab.com

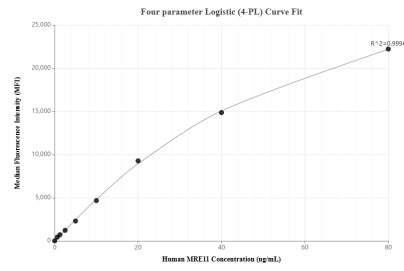
W: ptgcn.com

This product is exclusively available under Proteintech Group brand and is not available to purchase from any other manufacturer.

Selected Validation Data



The mean MRE11 concentration was determined to be 36.2 ng/mL in HEK-293 cell extract based on a 1.2 mg/mL extract load, 17.7 ng/mL in HepG2 cell extract based on a 1.2 mg/mL extract load, 7.4 ng/mL in HUH-7 cell extract based on a 1.2 mg/mL extract load.



Cytometric bead array standard curve of MP02855-1, MRE11 Recombinant Matched Antibody Pair, PBS Only. Capture antibody: 87066-2-PBS. Detection antibody: 87066-1-PBS. Standard: Ag1105. Range: 0.625-80 ng/mL.