

For Research Use Only

# Phospho-TAU (Ser396/404) Recombinant monoclonal antibody, PBS Only

Catalog Number: 87061-1-PBS



## Basic Information

<b>Catalog Number:</b> 87061-1-PBS	<b>GenBank Accession Number:</b> BC000558	<b>Purification Method:</b> Protein A purification
<b>Source:</b> Rabbit	<b>GeneID (NCBI):</b> 4137	<b>CloneNo.:</b> 252396E1
<b>Isotype:</b> IgG	<b>UNIPROT ID:</b> P10636	
	<b>Full Name:</b> microtubule-associated protein tau	
	<b>Calculated MW:</b> 37-46, 79-81 kDa	
	<b>Observed MW:</b> 45-60 kDa	

## Applications

**Tested Applications:**  
WB, Indirect ELISA

**Species Specificity:**  
human, mouse

## Background Information

Tau isolated from individuals with AD is extensively phosphorylated and more than 40 sites have been reported so far. Hyperphosphorylated tau has an impaired ability to stabilize microtubules, and is capable of self-assembling into aggregates that can template normal tau into filaments, making hyperphosphorylation a clear disease-determining posttranslational modification in tauopathies.

## Storage

**Storage:**  
Store at -80°C.  
**The product is shipped with ice packs. Upon receipt, store it immediately at -80°C**

**Storage Buffer:**  
PBS only, pH7.3

For technical support and original validation data for this product please contact:

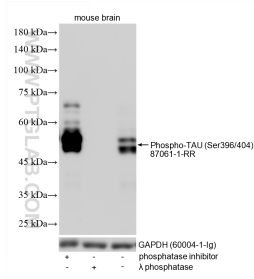
T: 4006900926

E: [Proteintech-CN@ptglab.com](mailto:Proteintech-CN@ptglab.com)

W: [ptgcn.com](http://ptgcn.com)

**This product is exclusively available under Proteintech Group brand and is not available to purchase from any other manufacturer.**

## Selected Validation Data



Non-treated mouse brain tissue, phosphatase inhibitor treated mouse brain tissue and  $\lambda$  phosphatase treated mouse brain tissue were subjected to SDS PAGE followed by western blot with 87061-1-RR (Phospho-TAU(Ser396/404) antibody) at dilution of 1:2000 incubated at room temperature for 1.5 hours. The membrane was stripped and reblotted with GAPDH (60004-1-1g) antibody as a loading control. This data was developed using the same antibody clone with 87061-1-

