

For Research Use Only

PDLIM3 Recombinant monoclonal antibody, PBS Only (Capture)

Catalog Number:87058-2-PBS



Basic Information

Catalog Number: 87058-2-PBS	GenBank Accession Number: BC027870	Purification Method: Protein A purification
Source: Rabbit	GeneID (NCBI): 27295	CloneNo.: 252308B8
Isotype: IgG	UNIPROT ID: Q53GG5	
Immunogen Catalog Number: AG3934	Full Name: PDZ and LIM domain 3	
	Calculated MW: 316 aa, 34 kDa	
	Observed MW: 35 kDa	

Applications

Tested Applications:
WB, Cytometric bead array, Sandwich ELISA, Indirect ELISA

Species Specificity:
human, mouse, rat

Background Information

PDLIM3, also known as ALP, contains a PDZ domain and a LIM domain. PDLIM3 binds the spectrin-like repeats of alpha-actinin-2 and colocalizes with alpha-actinin-2 at the Z lines of skeletal muscle.

Storage

Storage:
Store at -80°C.
The product is shipped with ice packs. Upon receipt, store it immediately at -80°C

Storage Buffer:
PBS only, pH7.3

For technical support and original validation data for this product please contact:

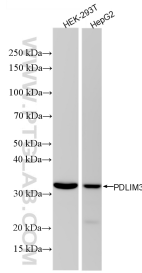
T: 4006900926

E: Proteintech-CN@ptglab.com

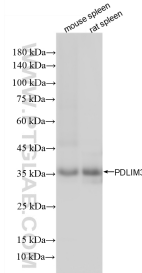
W: ptgcn.com

This product is exclusively available under Proteintech Group brand and is not available to purchase from any other manufacturer.

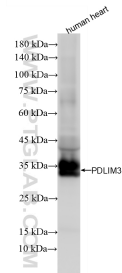
Selected Validation Data



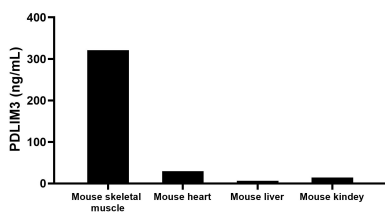
Various lysates were subjected to SDS PAGE followed by western blot with 87058-2-RR (PDLIM3 antibody) at dilution of 1:10000 incubated at room temperature for 1.5 hours. This data was developed using the same antibody clone with 87058-2-PBS in a different storage buffer formulation.



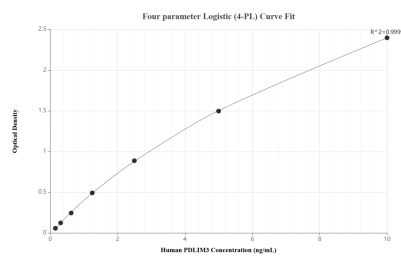
Various lysates were subjected to SDS PAGE followed by western blot with 87058-2-RR (PDLIM3 antibody) at dilution of 1:3000 incubated at room temperature for 1.5 hours. This data was developed using the same antibody clone with 87058-2-PBS in a different storage buffer formulation.



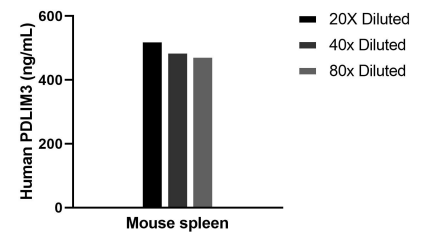
human heart tissue were subjected to SDS PAGE followed by western blot with 87058-2-RR (PDLIM3 antibody) at dilution of 1:3000 incubated at room temperature for 1.5 hours. This data was developed using the same antibody clone with 87058-2-PBS in a different storage buffer formulation.



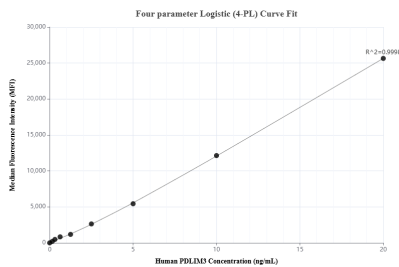
The mean PDLIM3 concentration was determined to be 321.00 ng/mL in mouse skeletal muscle extract based on a 4.10 mg/mL extract load, 29.50 ng/mL in mouse heart extract based on a 5.40 mg/mL extract load, 6.40 ng/mL in mouse liver extract based on a 8.40 mg/mL extract load and 14.40 ng/mL in mouse kidney extract based on a 8.4 mg/mL extract load.



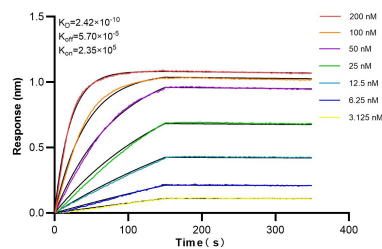
Sandwich ELISA standard curve of MP02852-1, Human PDLIM3 Recombinant Matched Antibody Pair - PBS only. 87058-2-PBS was coated to a plate as the capture antibody and incubated with serial dilutions of standard Ag3934. 87058-1-PBS was HRP conjugated as the detection antibody. Range: 0.156-10 ng/mL



The mean PDLIM3 concentration was determined to be 495.6 ng/mL in mouse spleen tissue extract based on a 6.4 mg/mL extract load.



Cytometric bead array standard curve of MP02852-1, PDLIM3 Recombinant Matched Antibody Pair, PBS Only. Capture antibody: 87058-2-PBS. Detection antibody: 87058-1-PBS. Standard: Ag3934. Range: 0.156-20 ng/mL



Biolayer interferometry (BLI) kinetic assays of 87058-2-RR against Human MCM6 were performed. The affinity constant is 0.242 nM.