

For Research Use Only



Integrin alpha-1 Recombinant monoclonal antibody, PBS Only (Detector)

Catalog Number: 87056-4-PBS

Basic Information

Catalog Number: 87056-4-PBS	GenBank Accession Number: BC137121	Purification Method: Protein A purification
Source: Rabbit	GeneID (NCBI): 3672	CloneNo.: 251984B10
Isotype: IgG	UNIPROT ID: P56199	
Immunogen Catalog Number: EG2089	Full Name: integrin, alpha 1	
	Calculated MW: 1179 aa, 131 kDa	

Applications

Tested Applications:
Sandwich ELISA, Indirect ELISA

Species Specificity:
human

Background Information

Storage

Storage:
Store at -80°C.
The product is shipped with ice packs. Upon receipt, store it immediately at -80°C

Storage Buffer:
PBS only, pH7.3

For technical support and original validation data for this product please contact:

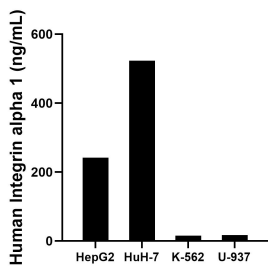
T: 4006900926

E: Proteintech-CN@ptglab.com

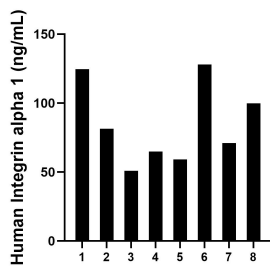
W: ptgcn.com

This product is exclusively available under Proteintech Group brand and is not available to purchase from any other manufacturer.

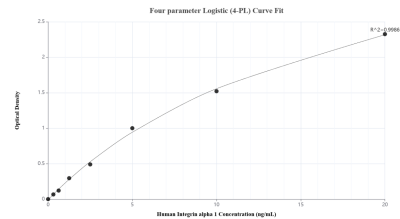
Selected Validation Data



The mean Integrin alpha 1 concentration was determined to be 241.89 ng/mL in HepG2 cell extract based on a 1.20 mg/mL extract load, 523.16 ng/mL in HuH-7 cell extract based on a 1.20 mg/mL extract load, 15.42 ng/mL in K-562 cell extract based on a 1.20 mg/mL extract load and 17.42 ng/mL in U-937 cell extract based on a 1.20 mg/mL extract load.



Plasma of eight individual healthy human donors was measured. The Integrin alpha 1 concentration of detected samples was determined to be 84.94 ng/mL with a range of 50.93-128.02 ng/mL.



Sandwich ELISA standard curve of MP02854-2, Human Integrin alpha 1 Recombinant Matched Antibody Pair - PBS only. 87056-2-PBS was coated to a plate as the capture antibody and incubated with serial dilutions of standard Eg2089. 87056-4-PBS was HRP conjugated as the detection antibody. Range: 0.313-20 ng/mL.