

For Research Use Only

SAP30BP Recombinant monoclonal antibody, PBS Only (Detector)

Catalog Number: 87054-3-PBS



Basic Information

Catalog Number: 87054-3-PBS	GenBank Accession Number: BC007592	Purification Method: Protein A purification
Source: Rabbit	GeneID (NCBI): 29115	CloneNo.: 252137E7
Isotype: IgG	UNIPROT ID: Q9UHR5	
Immunogen Catalog Number: AG15051	Full Name: SAP30 binding protein	
	Calculated MW: 308 aa, 34 kDa	

Applications

Tested Applications:
Sandwich ELISA, Indirect ELISA

Species Specificity:
human

Background Information

Storage

Storage:
Store at -80°C.
The product is shipped with ice packs. Upon receipt, store it immediately at -80°C

Storage Buffer:
PBS only, pH7.3

For technical support and original validation data for this product please contact:

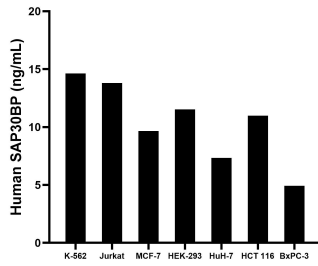
T: 4006900926

E: Proteintech-CN@ptglab.com

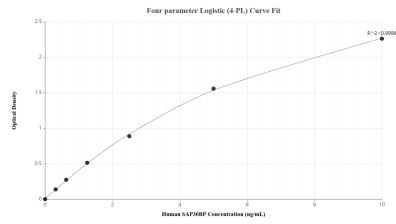
W: ptgcn.com

This product is exclusively available under Proteintech Group brand and is not available to purchase from any other manufacturer.

Selected Validation Data



The mean SAP30BP concentration was determined to be 14.64 ng/mL in K-562 cell extract based on a 1.20 mg/mL extract load, 13.81 ng/mL in Jurkat cell extract based on a 1.20 mg/mL extract load, 9.67 ng/mL in MCF-7 cell extract based on a 1.20 mg/mL extract load, 11.54 ng/mL in HEK-293 cell extract based on a 1.20 mg/mL extract load, 7.34 ng/mL in HuH-7 cell extract based on a 1.20 mg/mL extract load, 10.99 ng/mL in HCT 116 cell extract based on a 1.20 mg/mL extract



Sandwich ELISA standard curve of MP03025-1, Human SAP30BP Recombinant Matched Antibody Pair - PBS only. 87054-1-PBS was coated to a plate as the capture antibody and incubated with serial dilutions of standard Ag15051. 87054-3-PBS was HRP conjugated as the detection antibody. Range: 0.313-10 ng/mL