

For Research Use Only

# SAP30BP Recombinant monoclonal antibody, PBS Only (Capture)

Catalog Number:87054-1-PBS



## Basic Information

<b>Catalog Number:</b> 87054-1-PBS	<b>GenBank Accession Number:</b> BC007592	<b>Purification Method:</b> Protein A purification
<b>Source:</b> Rabbit	<b>GeneID (NCBI):</b> 29115	<b>CloneNo.:</b> 252137B1
<b>Isotype:</b> IgG	<b>UNIPROT ID:</b> Q9UHR5	
<b>Immunogen Catalog Number:</b> AG15051	<b>Full Name:</b> SAP30 binding protein	
	<b>Calculated MW:</b> 308 aa, 34 kDa	
	<b>Observed MW:</b> 45 kDa	

## Applications

**Tested Applications:**  
WB, IF/ICC, Sandwich ELISA, Indirect ELISA

**Species Specificity:**  
human, mouse, rat

## Background Information

SAP30BP, also named as SAP30-binding protein, is a 308 amino acid protein, which belongs to the HCNGP family. SAP30BP localizes in Nucleus and Interacts with SAP30. DDX54 Induces cell death and may act as a transcriptional corepressor of a gene related to cell survival. SAP30BP may be involved in the regulation of beta-2-microglobulin genes.

## Storage

**Storage:**  
Store at -80°C.  
**The product is shipped with ice packs. Upon receipt, store it immediately at -80°C**

**Storage Buffer:**  
PBS only, pH7.3

For technical support and original validation data for this product please contact:

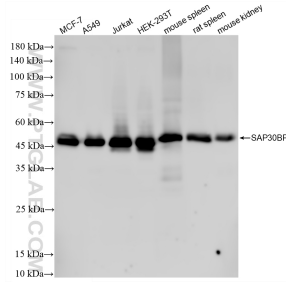
T: 4006900926

E: [Proteintech-CN@ptglab.com](mailto:Proteintech-CN@ptglab.com)

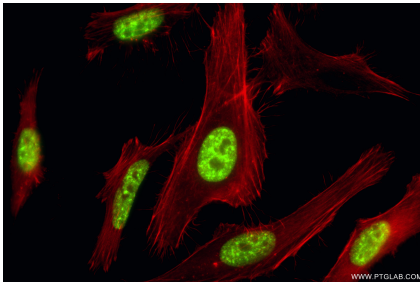
W: [ptgcn.com](http://ptgcn.com)

**This product is exclusively available under Proteintech Group brand and is not available to purchase from any other manufacturer.**

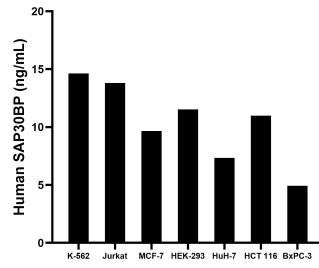
## Selected Validation Data



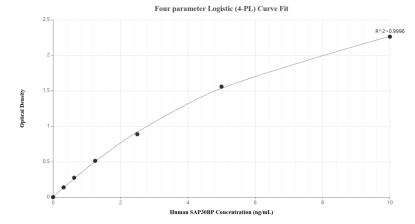
Various lysates were subjected to SDS PAGE followed by western blot with 87054-1-RR (SAP30BP antibody) at dilution of 1:10000 incubated at room temperature for 1.5 hours. This data was developed using the same antibody clone with 87054-1-PBS in a different storage buffer formulation.



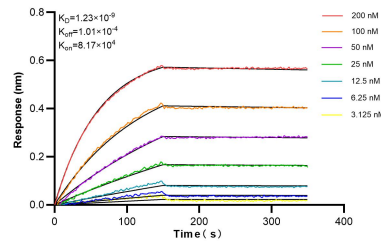
Immunofluorescent analysis of (4% PFA) fixed HeLa cells using SAP30BP antibody (87054-1-RR, Clone: 252137B1 ) at dilution of 1:1000 and CoraLite@488-Conjugated Goat Anti-Rabbit IgG(H+L) (SA00013-2), CL594-Phalloidin (red). This data was developed using the same antibody clone with 87054-1-PBS in a different storage buffer formulation.



The mean SAP30BP concentration was determined to be 14.64 ng/mL in K-562 cell extract based on a 1.20 mg/mL extract load, 13.81 ng/mL in Jurkat cell extract based on a 1.20 mg/mL extract load, 9.67 ng/mL in MCF-7 cell extract based on a 1.20 mg/mL extract load, 11.54 ng/mL in HEK-293 cell extract based on a 1.20 mg/mL extract load, 7.34 ng/mL in HuH-7 cell extract based on a 1.20 mg/mL extract load, 10.99 ng/mL in HCT 116 cell extract based on a 1.20 mg/mL extract



Sandwich ELISA standard curve of MP03025-1, Human SAP30BP Recombinant Matched Antibody Pair - PBS only. 87054-1-PBS was coated to a plate as the capture antibody and incubated with serial dilutions of standard Ag15051. 87054-3-PBS was HRP conjugated as the detection antibody. Range: 0.313-10 ng/mL.



Biolayer interferometry (BLI) kinetic assays of 87054-1-RR against Human SAP30BP were performed. The affinity constant is 1.23 nM.