

For Research Use Only

SOX10 Recombinant monoclonal antibody

Catalog Number: 87051-3-RR



Basic Information

Catalog Number: 87051-3-RR	GenBank Accession Number: BC002824	Purification Method: Protein A purification
Source: Rabbit	GeneID (NCBI): 6663	CloneNo.: 252024E10
Isotype: IgG	UNIPROT ID: P56693	Recommended Dilutions: WB: 1:5000-1:50000 IF/ICC: 1:500-1:2000
Immunogen Catalog Number: AG38090	Full Name: SRY (sex determining region Y)-box 10	
	Calculated MW: 50 kDa	
	Observed MW: 50-65 kDa	

Applications

Tested Applications: WB, IF/ICC, ELISA	Positive Controls:
Species Specificity: human, rat	WB : MDA-MB-453 cells, A375 cells, SW480 cells, C6 cells IF/ICC : A375 cells,

Background Information

Sox10 is a transcription factor that has a crucial role in complex signalling pathways regulating central nervous system and neural crest development. The calculated molecular weight of SOX10 is 50 kDa, but modified SOX10 is about 55-65 kDa. (PMID: 23799842, 39982575)

Storage

Storage:
Store at -20°C. Stable for one year after shipment.
Storage Buffer:
PBS with 0.02% sodium azide and 50% glycerol, pH7.3
Aliquoting is unnecessary for -20°C storage

For technical support and original validation data for this product please contact:

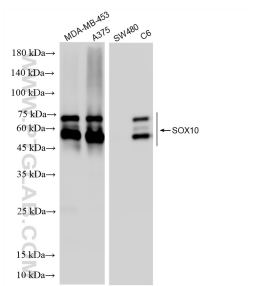
T: 4006900926

E: Proteintech-CN@ptglab.com

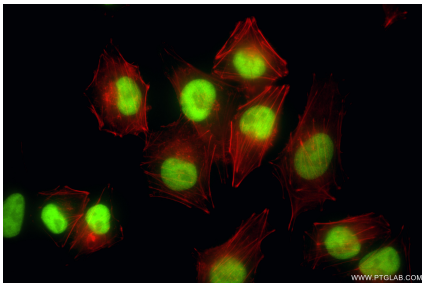
W: ptgcn.com

This product is exclusively available under Proteintech Group brand and is not available to purchase from any other manufacturer.

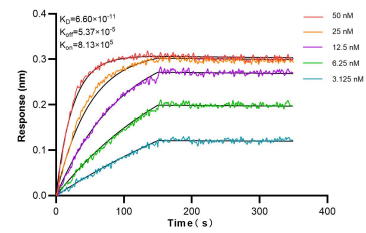
Selected Validation Data



Various lysates were subjected to SDS PAGE followed by western blot with 87051-3-RR (SOX10 antibody) at dilution of 1:10000 incubated at room temperature for 1.5 hours.



Immunofluorescent analysis of (4% PFA) fixed A375 cells using SOX10 antibody (87051-3-RR, Clone: 252024E10) at dilution of 1:1000 and CoraLite® 488-Conjugated Goat Anti-Rabbit IgG(H+L) (SA00013-2), CL594-Phalloidin (red).



Biolayer interferometry (BLI) kinetic assays of 87051-3-RR against Human SOX10 were performed. The affinity constant is 66.0 pM.