

For Research Use Only

Mouse CD300a Recombinant monoclonal antibody, PBS Only (Detector)

Catalog Number: 87050-1-PBS



Basic Information

Catalog Number: 87050-1-PBS	GenBank Accession Number: GeneID (NCBI): 217303	Purification Method: Protein A purification
Source: Rabbit	UNIPROT ID: Q6S1Q0-1	CloneNo.: 251972C10
Isotype: IgG	Full Name: CD300A antigen	
Immunogen Catalog Number: EG2675	Calculated MW: 36 kDa	
	Observed MW: 60-70 kDa	

Applications

Tested Applications:
WB, Sandwich ELISA, Indirect ELISA

Species Specificity:
mouse, rat

Background Information

CD300a is a transmembrane protein with an immunoglobulin (Ig)V-like extracellular domain and a cytoplasmic tail containing immunoreceptor tyrosine-based inhibitory motifs (ITIMs), providing the receptor with an inhibitory capacity. The relevance of the CD300a molecule in several pathological conditions has been highlighted by multiple studies. (PMID: 37762055)

Storage

Storage:
Store at -80°C.
The product is shipped with ice packs. Upon receipt, store it immediately at -80°C

Storage Buffer:
PBS only, pH7.3

For technical support and original validation data for this product please contact:

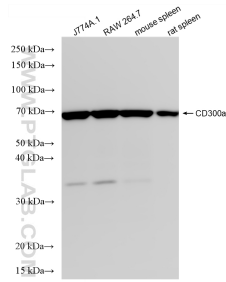
T: 4006900926

E: Proteintech-CN@ptglab.com

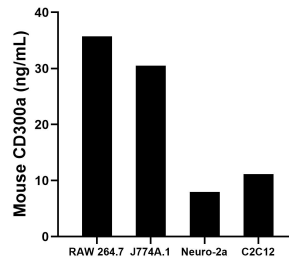
W: ptgcn.com

This product is exclusively available under Proteintech Group brand and is not available to purchase from any other manufacturer.

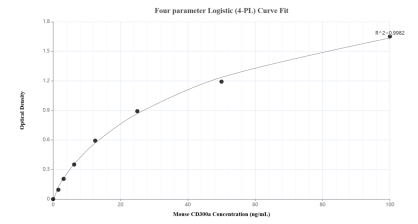
Selected Validation Data



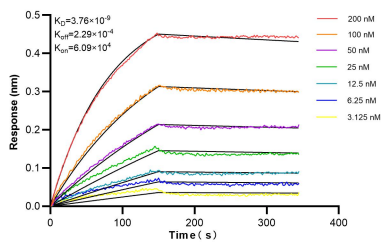
Various lysates were subjected to SDS PAGE followed by western blot with 87050-1-RR (CD300a antibody) at dilution of 1:2000 incubated at room temperature for 1.5 hours. This data was developed using the same antibody clone with 87050-1-PBS in a different storage buffer formulation.



The mean CD300a concentration was determined to be 35.71 ng/mL in RAW 264.7 cell extract based on a 1.20 mg/mL extract load, 30.51 ng/mL in J774A.1 cell extract based on a 1.30 mg/mL extract load, 7.96 ng/mL in Neuro-2a cell extract based on a 1.20 mg/mL extract load and 11.16 ng/mL in C2C12 cell extract based on a 1.10 mg/mL extract load.



Sandwich ELISA standard curve of MP03183-1, Mouse CD300a Recombinant Matched Antibody Pair - PBS only. 87050-2-PBS was coated to a plate as the capture antibody and incubated with serial dilutions of standard Eg2675. 87050-1-PBS was HRP conjugated as the detection antibody. Range: 1.56-100 ng/mL.



Bi-layer interferometry (BLI) kinetic assays of 87050-1-RR against Mouse CD300a were performed. The affinity constant is 3.76 nM.