

For Research Use Only

# OTUD6B Recombinant monoclonal antibody, PBS Only (Detector)

Catalog Number:87049-2-PBS



## Basic Information

Catalog Number:

87049-2-PBS

Source:

Rabbit

Isotype:

IgG

Immunogen Catalog Number:

AG22044

GenBank Accession Number:

BC029760

GeneID (NCBI):

51633

UNIPROT ID:

Q8N6M0

Full Name:

OTU domain containing 6B

Calculated MW:

293 aa, 34 kDa

Purification Method:

Protein A purification

CloneNo.:

251982B2

## Applications

Tested Applications:

Cytometric bead array, Indirect ELISA

Species Specificity:

human

## Background Information

### Storage

Storage:

Store at -80°C.

The product is shipped with ice packs. Upon receipt, store it immediately at -80°C

Storage Buffer:

PBS only, pH7.3

For technical support and original validation data for this product please contact:

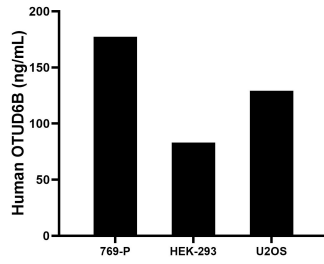
T: 4006900926

E: Proteintech-CN@ptglab.com

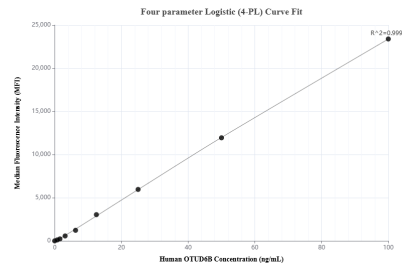
W: ptgcn.com

This product is exclusively available under Proteintech Group brand and is not available to purchase from any other manufacturer.

## Selected Validation Data



The mean OTUD6B concentration was determined to be 177.4 ng/mL in 769-P cell extract based on a 1.2 mg/mL extract load, 83.1 ng/mL in HEK-293 cell extract based on a 1.2 mg/mL extract load, 129.1 ng/mL in U2OS cell extract based on a 1.2 mg/mL extract load.



Cytometric bead array standard curve of MP02964-1, OTUD6B Recombinant Matched Antibody Pair, PBS Only. Capture antibody: 87049-1-PBS. Detection antibody: 87049-2-PBS. Standard: Ag22044. Range: 0.781-100 ng/mL