

For Research Use Only

# Phospho-TAU (Ser214) Recombinant monoclonal antibody, PBS Only

Catalog Number: 87043-3-PBS



## Basic Information

Catalog Number:

87043-3-PBS

Source:

Rabbit

Isotype:

IgG

GenBank Accession Number:

BC000558

GeneID (NCBI):

4137

UNIPROT ID:

P10636

Full Name:

microtubule-associated protein tau

Calculated MW:

37-46, 79-81 kDa

Observed MW:

45-60 kDa

Purification Method:

Protein A purification

CloneNo.:

252082D9

## Applications

Tested Applications:

WB, Indirect ELISA

Species Specificity:

human, mouse, rat

## Background Information

Phospho-Tau (Ser214) is a PKA-dependent phosphorylation site critical for Alzheimer's disease (AD) pathology. Ser214 hyperphosphorylation disrupts microtubule binding, promotes neurofibrillary tangle formation, and serves as a highly specific biomarker for AD and related tauopathies.

## Storage

Storage:

Store at -80°C.

**The product is shipped with ice packs. Upon receipt, store it immediately at -80°C**

Storage Buffer:

PBS only, pH7.3

For technical support and original validation data for this product please contact:

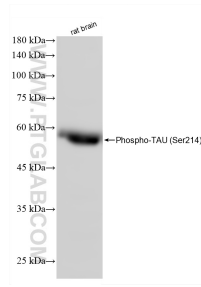
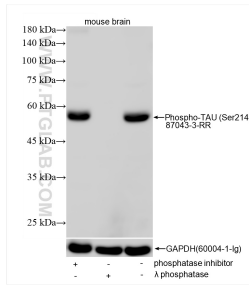
T: 4006900926

E: [Proteintech-CN@ptglab.com](mailto:Proteintech-CN@ptglab.com)

W: [ptgcn.com](http://ptgcn.com)

**This product is exclusively available under Proteintech Group brand and is not available to purchase from any other manufacturer.**

## Selected Validation Data



Non-treated mouse brain tissue, phosphatase inhibitor treated mouse brain tissue and phosphatase treated mouse brain tissue were subjected to SDS PAGE followed by western blot with 87043-3-RR (Phospho-TAU (Ser214) antibody) at dilution of 1:2000 incubated at room temperature for 1.5 hours. The membrane was stripped and re-blotted with GAPDH (60004-1-Ig) antibody as a loading control. This data was developed using the same antibody clone with 87043-3-



rat brain tissue were subjected to SDS PAGE followed by western blot with 87043-3-RR (TAU-Ser214 antibody) at dilution of 1:2000 incubated at room temperature for 1.5 hours. This data was developed using the same antibody clone with 87043-3-PBS in a different storage buffer formulation.