

For Research Use Only

# GALR2 Recombinant monoclonal antibody

Catalog Number:87015-1-RR



## Basic Information

<b>Catalog Number:</b> 87015-1-RR	<b>GenBank Accession Number:</b> BC074915	<b>Purification Method:</b> Protein A purification
<b>Source:</b> Rabbit	<b>GeneID (NCBI):</b> 8811	<b>CloneNo.:</b> 252067G6
<b>Isotype:</b> IgG	<b>UNIPROT ID:</b> O43603	<b>Recommended Dilutions:</b> WB: 1:1000-1:4000
<b>Immunogen Catalog Number:</b> AG24154	<b>Full Name:</b> galanin receptor 2	
	<b>Calculated MW:</b> 387 aa, 42 kDa	
	<b>Observed MW:</b> 42 kDa	

## Applications

<b>Tested Applications:</b> WB, ELISA	<b>Positive Controls:</b> WB : HEK-293 cells, SH-SY5Y cells, C6 cells, mouse brain tissue, rat brain tissue
<b>Species Specificity:</b> human, mouse, rat	

## Background Information

Galanin receptor type 2 (GALR2) is a receptor for galanin, GALP, and the hormone SPX1 (PMID:24517231). It is an important neuromodulator present in the brain, gastrointestinal system, and hypothalamo-pituitary axis. Activation of the GALR2 may protect the hippocampus from neuronal damage (PMID: 17263796). It is a 30-amino acid non-C-terminally amidated peptide that potently stimulates growth hormone secretion, inhibits cardiac vagal slowing of heart rate, abolishes sinus arrhythmia, and inhibits postprandial gastrointestinal motility. The activity of this receptor is mediated by G proteins that activate the phospholipase C/protein kinase C pathway (via G(q)) and that inhibits adenylyl cyclase. GALR2 has a calculated molecular weight of 42 kDa.

## Storage

**Storage:**  
Store at -20°C. Stable for one year after shipment.

**Storage Buffer:**  
PBS with 0.02% sodium azide and 50% glycerol, pH7.3

Aliquoting is unnecessary for -20°C storage

For technical support and original validation data for this product please contact:

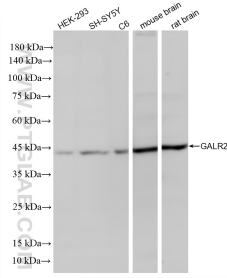
T: 4006900926

E: Proteintech-CN@ptglab.com

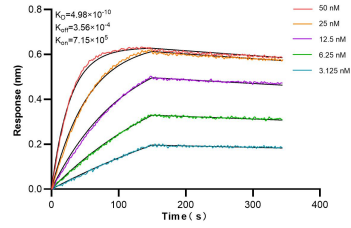
W: ptgcn.com

This product is exclusively available under Proteintech Group brand and is not available to purchase from any other manufacturer.

## Selected Validation Data



Various lysates were subjected to SDS PAGE followed by western blot with 87015-1-RR (GALR2 antibody) at dilution of 1:2000 incubated at room temperature for 1.5 hours.



Biolayer interferometry (BLI) kinetic assays of 87015-1-RR against Human GALR2 were performed. The affinity constant is 0.498 nM.