

For Research Use Only

JAB1 Recombinant monoclonal antibody, PBS Only (Detector)

Catalog Number:87012-3-PBS



Basic Information

Catalog Number: 87012-3-PBS	GenBank Accession Number: BC001187	Purification Method: Protein A purification
Source: Rabbit	GeneID (NCBI): 10987	CloneNo.: 252139A5
Isotype: IgG	UNIPROT ID: Q92905	
Immunogen Catalog Number: AG25950	Full Name: COP9 constitutive photomorphogenic homolog subunit 5 (Arabidopsis)	
	Calculated MW: 37 kDa	

Applications

Tested Applications:
Sandwich ELISA, Indirect ELISA

Species Specificity:
human

Background Information

Storage

Storage:
Store at -80°C.
The product is shipped with ice packs. Upon receipt, store it immediately at -80°C

Storage Buffer:
PBS only, pH7.3

For technical support and original validation data for this product please contact:

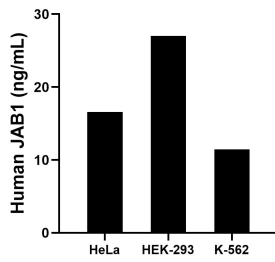
T: 4006900926

E: Proteintech-CN@ptglab.com

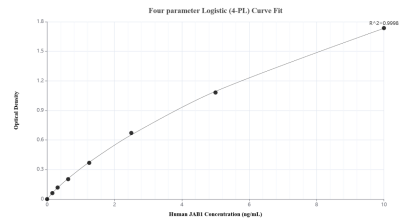
W: ptgcn.com

This product is exclusively available under Proteintech Group brand and is not available to purchase from any other manufacturer.

Selected Validation Data



The mean JAB1 concentration was determined to be 16.58 ng/mL in HeLa cell extract based on a 1.20 mg/mL extract load, 27.02 ng/mL in HEK-293 cell extract based on a 1.20 mg/mL extract load and 11.45 ng/mL in K-562 cell extract based on a 1.20 mg/mL extract load.



Sandwich ELISA standard curve of MP02823-2, Human JAB1 Recombinant Matched Antibody Pair - PBS only. 87012-1-PBS was coated to a plate as the capture antibody and incubated with serial dilutions of standard Ag25950. 87012-3-PBS was HRP conjugated as the detection antibody. Range: 0.156-10 ng/mL