

For Research Use Only

# JAB1 Recombinant monoclonal antibody, PBS Only (Detector)

Catalog Number:87012-2-PBS



## Basic Information

Catalog Number:

87012-2-PBS

Source:

Rabbit

Isotype:

IgG

Immunogen Catalog Number:

AG25950

GenBank Accession Number:

BC001187

GeneID (NCBI):

10987

UNIPROT ID:

Q92905

Full Name:

COP9 constitutive photomorphogenic homolog subunit 5 (Arabidopsis)

Calculated MW:

37 kDa

Purification Method:

Protein A purification

CloneNo.:

252139E9

## Applications

Tested Applications:

Cytometric bead array, Indirect ELISA

Species Specificity:

human

## Background Information

### Storage

Storage:

Store at -80°C.

**The product is shipped with ice packs. Upon receipt, store it immediately at -80°C**

Storage Buffer:

PBS only, pH7.3

For technical support and original validation data for this product please contact:

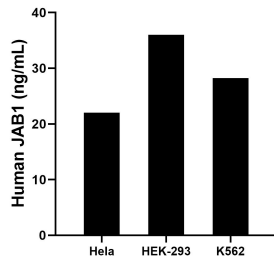
T: 4006900926

E: [Proteintech-CN@ptglab.com](mailto:Proteintech-CN@ptglab.com)

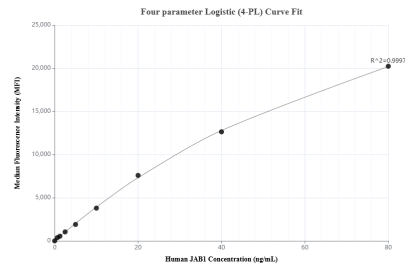
W: [ptgcn.com](http://ptgcn.com)

**This product is exclusively available under Proteintech Group brand and is not available to purchase from any other manufacturer.**

## Selected Validation Data



The mean JAB1 concentration was determined to be 22.0 ng/mL in HeLa cell extract based on a 1.2 mg/mL extract load, 36.0 ng/mL in HEK-293 cell extract based on a 1.2 mg/mL extract load, 28.2 ng/mL in K562 cell extract based on a 1.2 mg/mL extract load.



Cytometric bead array standard curve of MP02823-1, JAB1 Recombinant Matched Antibody Pair, PBS Only. Capture antibody: 87012-1-PBS. Detection antibody: 87012-2-PBS. Standard: Ag25950. Range: 0.625-80 ng/mL.