

For Research Use Only

ELK1 Recombinant monoclonal antibody, PBS Only (Capture)

Catalog Number:87009-1-PBS



Basic Information

Catalog Number: 87009-1-PBS	GenBank Accession Number: BC056150	Purification Method: Protein A purification
Source: Rabbit	GeneID (NCBI): 2002	CloneNo.: 252085F8
Isotype: IgG	UNIPROT ID: P19419	
Immunogen Catalog Number: AG26683	Full Name: ELK1, member of ETS oncogene family	
	Calculated MW: 45 kDa	

Applications

Tested Applications:
Sandwich ELISA, Indirect ELISA

Species Specificity:
human

Background Information

Storage

Storage:
Store at -80°C.
The product is shipped with ice packs. Upon receipt, store it immediately at -80°C

Storage Buffer:
PBS only, pH7.3

For technical support and original validation data for this product please contact:

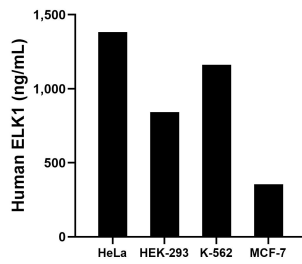
T: 4006900926

E: Proteintech-CN@ptglab.com

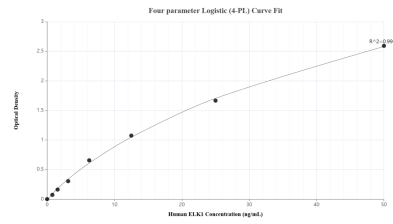
W: ptgcn.com

This product is exclusively available under Proteintech Group brand and is not available to purchase from any other manufacturer.

Selected Validation Data



The mean ELK1 concentration was determined to be 1,382.52 ng/mL in HeLa cell extract based on a 1.20 mg/mL extract load, 841.80 ng/mL in HEK-293 cell extract based on a 1.20 mg/mL extract load, 1,161.24 ng/mL in K-562 cell extract based on a 1.20 mg/mL extract load and 354.56 ng/mL in MCF-7 cell extract based on a 1.20 mg/mL extract load.



Sandwich ELISA standard curve of MP02998-1, Human ELK1 Recombinant Matched Antibody Pair - PBS only. 87009-1-PBS was coated to a plate as the capture antibody and incubated with serial dilutions of standard Ag26683. 87009-2-PBS was HRP conjugated as the detection antibody. Range: 0.781-50 ng/mL