

For Research Use Only

# Di-Methyl-Histone H4 (Lys20) Recombinant monoclonal antibody

Catalog Number:87006-1-RR



## Basic Information

Catalog Number:

87006-1-RR

Source:

Rabbit

Isotype:

IgG

GenBank Accession Number:

BC069654

GeneID (NCBI):

8359

UNIPROT ID:

P62805

Full Name:

histone cluster 1, H4a

Observed MW:

15 kDa

Purification Method:

Protein A purification

CloneNo.:

251934G9

Recommended Dilutions:

WB: 1:2000-1:10000

IHC: 1:500-1:2000

IF/ICC: 1:500-1:2000

Dot Blot: 1:10-1:100

## Applications

Tested Applications:

WB, IHC, IF/ICC, Dot Blot, ELISA

Species Specificity:

human, mouse, rat

**Note-IHC: suggested antigen retrieval with TE buffer pH 9.0; (\*) Alternatively, antigen retrieval may be performed with citrate buffer pH 6.0**

Positive Controls:

WB : HeLa cells, HEK-293T cells, NIH/3T3 cells, HSC-T6 cells, mouse liver tissue

IHC : mouse colon tissue,

IF/ICC : HeLa cells,

Dot Blot: / /,

## Background Information

### Storage

Storage:

Store at -20°C. Stable for one year after shipment.

Storage Buffer:

PBS with 0.02% sodium azide and 50% glycerol, pH7.3

Aliquoting is unnecessary for -20°C storage

For technical support and original validation data for this product please contact:

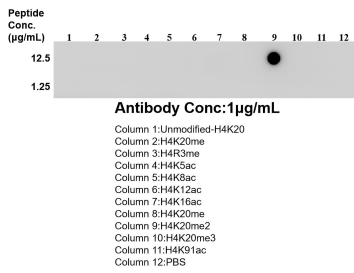
T: 4006900926

E: Proteintech-CN@ptglab.com

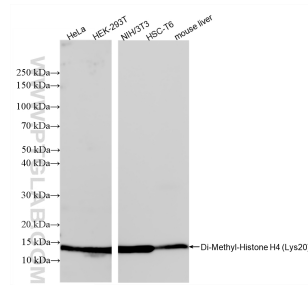
W: ptgcn.com

**This product is exclusively available under Proteintech Group brand and is not available to purchase from any other manufacturer.**

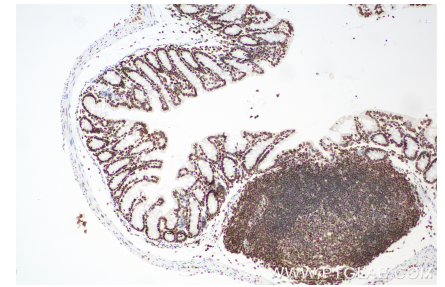
## Selected Validation Data



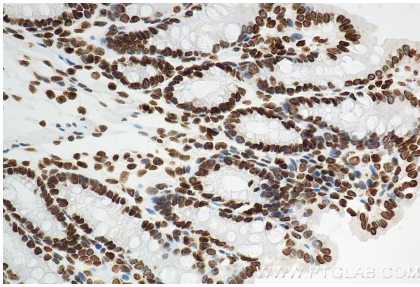
Dot blot analysis was used to confirm the specificity of 86990-2-RR Di-Methyl-Histone H4 (Lys20) antibody. peptides were spotted onto NC and probed with antibody at 1 µg/ml. The amount of peptide ( µ g/ml) spotted is indicated next to each row.



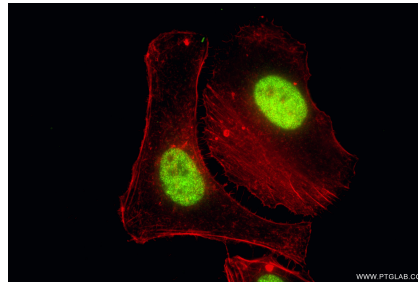
Various lysates were subjected to SDS PAGE followed by western blot with 87006-1-RR (Di-Methyl-Histone H4 (Lys20) antibody) at dilution of 1:5000 incubated at room temperature for 1.5 hours.



Immunohistochemical analysis of paraffin-embedded mouse colon tissue slide using 87006-1-RR (Di-Methyl-Histone H4 (Lys20) antibody) at dilution of 1:1000 (under 10x lens). Heat mediated antigen retrieval with Tris-EDTA buffer (pH 9.0).



Immunohistochemical analysis of paraffin-embedded mouse colon tissue slide using 87006-1-RR (Di-Methyl-Histone H4 (Lys20) antibody) at dilution of 1:1000 (under 40x lens). Heat mediated antigen retrieval with Tris-EDTA buffer (pH 9.0).



Immunofluorescent analysis of (4% PFA) fixed HeLa cells using Di-Methyl-Histone H4 (Lys20) antibody (87006-1-RR, Clone: 251934G9) at dilution of 1:1000 and CoraLite®488-Conjugated Goat Anti-Rabbit IgG(H+L) (SA00013-2), CL594-Phalloidin (red).