

For Research Use Only

PRKCSH Recombinant monoclonal antibody

Catalog Number:87004-3-RR



Basic Information

Catalog Number:

87004-3-RR

Source:

Rabbit

Isotype:

IgG

Immunogen Catalog Number:

AG2796

GenBank Accession Number:

BC013586

GeneID (NCBI):

5589

UNIPROT ID:

P14314

Full Name:

protein kinase C substrate 80K-H

Calculated MW:

80 kDa

Observed MW:

80 kDa

Purification Method:

Protein A purification

CloneNo.:

252090C1

Recommended Dilutions:

WB: 1:5000-1:50000

Applications

Tested Applications:

WB, ELISA

Species Specificity:

human, rat

Positive Controls:

WB : HeLa cells, Jurkat cells, HEK-293T cells, Daudi cells, rat liver tissue

Background Information

PRKCSH encodes the beta-subunit of glucosidase II, an N-linked glycan-processing enzyme in the endoplasmic reticulum (ER). This protein is an acidic phospho-protein known to be a substrate for protein kinase C. Defects in PRKCSH are a cause of an autosomal dominant polycystic liver disease (PCLD). Glucosidase II is an ER-localized enzyme that contains α and β subunits (Glucosidase II α and Glucosidase II β) which form a defined heterodimeric complex.

Storage

Storage:

Store at -20°C. Stable for one year after shipment.

Storage Buffer:

PBS with 0.02% sodium azide and 50% glycerol, pH7.3

Aliquoting is unnecessary for -20°C storage

For technical support and original validation data for this product please contact:

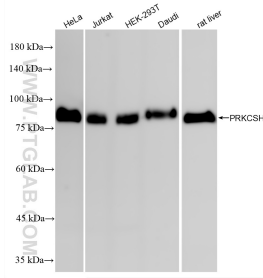
T: 4006900926

E: Proteintech-CN@ptglab.com

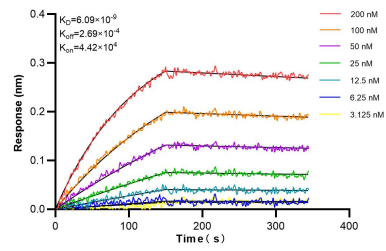
W: ptgcn.com

This product is exclusively available under Proteintech Group brand and is not available to purchase from any other manufacturer.

Selected Validation Data



Various lysates were subjected to SDS PAGE followed by western blot with 87004-3-RR (PRKCSH antibody) at dilution of 1:10000 incubated at room temperature for 1.5 hours.



Biolayer interferometry (BLI) kinetic assays of 87004-3-RR against Human PRKCSH were performed. The affinity constant is 6.09 nM.