

For Research Use Only

# PRKCSH Recombinant monoclonal antibody, PBS Only (Detector)

Catalog Number:87004-1-PBS



## Basic Information

Catalog Number: 87004-1-PBS	GenBank Accession Number: BC013586	Purification Method: Protein A purification
Source: Rabbit	GeneID (NCBI): 5589	CloneNo.: 252090G4
Isotype: IgG	UNIPROT ID: P14314	
Immunogen Catalog Number: AG2796	Full Name: protein kinase C substrate 80K-H	
	Calculated MW: 80 kDa	

## Applications

**Tested Applications:**  
Cytometric bead array, Indirect ELISA

**Species Specificity:**  
human

## Background Information

### Storage

**Storage:**  
Store at -80°C.  
**The product is shipped with ice packs. Upon receipt, store it immediately at -80°C**

**Storage Buffer:**  
PBS only, pH7.3

For technical support and original validation data for this product please contact:

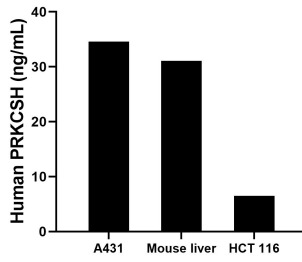
T: 4006900926

E: [Proteintech-CN@ptglab.com](mailto:Proteintech-CN@ptglab.com)

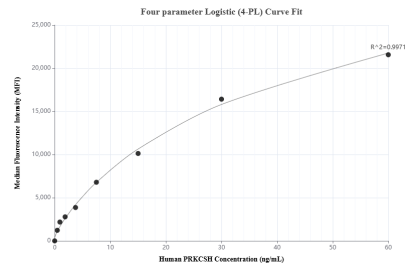
W: [ptgcn.com](http://ptgcn.com)

**This product is exclusively available under Proteintech Group brand and is not available to purchase from any other manufacturer.**

## Selected Validation Data



The mean PRKCSH concentration was determined to be 34.6 ng/mL in A431 cell extract based on a 1.2 mg/mL extract load, 31.1 ng/mL in mouse liver tissue extract based on a 8.4 mg/mL extract load, 6.5 ng/mL in HCT 116 cell extract based on a 1.2 mg/mL extract load.



Cytometric bead array standard curve of MP02821-1, PRKCSH Recombinant Matched Antibody Pair, PBS Only. Capture antibody: 87004-2-PBS. Detection antibody: 87004-1-PBS. Standard: Ag2796. Range: 0.469-60 ng/mL.