

For Research Use Only

# SDC2 Recombinant monoclonal antibody, PBS Only (Capture)

Catalog Number:87000-2-PBS



## Basic Information

<b>Catalog Number:</b> 87000-2-PBS	<b>GenBank Accession Number:</b> NM_002998.3	<b>Purification Method:</b> Protein A purification
<b>Source:</b> Rabbit	<b>GeneID (NCBI):</b> 6383	<b>CloneNo.:</b> 251827F11
<b>Isotype:</b> IgG	<b>UNIPROT ID:</b> P34741	
<b>Immunogen Catalog Number:</b> EG2947	<b>Full Name:</b> syndecan 2	
	<b>Calculated MW:</b> 22 kDa	

## Applications

**Tested Applications:**  
Sandwich ELISA, Indirect ELISA

**Species Specificity:**  
human

## Background Information

### Storage

**Storage:**  
Store at -80°C.  
**The product is shipped with ice packs. Upon receipt, store it immediately at -80°C**

**Storage Buffer:**  
PBS only, pH7.3

For technical support and original validation data for this product please contact:

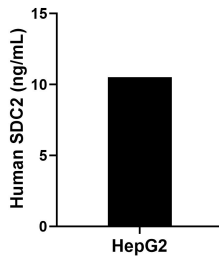
T: 4006900926

E: [Proteintech-CN@ptglab.com](mailto:Proteintech-CN@ptglab.com)

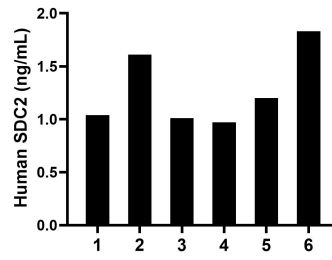
W: [ptgcn.com](http://ptgcn.com)

**This product is exclusively available under Proteintech Group brand and is not available to purchase from any other manufacturer.**

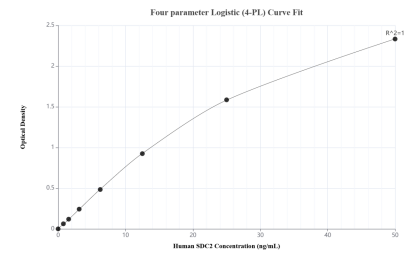
## Selected Validation Data



The mean SDC2 concentration was determined to be 10.51 ng/mL in HepG2 cell extract based on a 1.20 mg/mL extract load.



Plasma of six individual healthy human donors was measured. The SDC2 concentration of detected samples was determined to be 1.28 ng/mL with a range of 1.04-1.83 ng/mL.



Sandwich ELISA standard curve of MP02814-1, Human SDC2 Recombinant Matched Antibody Pair - PBS only. 87000-2-PBS was coated to a plate as the capture antibody and incubated with serial dilutions of standard Eg2947. 87000-1-PBS was HRP conjugated as the detection antibody. Range: 0.781-50 ng/mL.