

For Research Use Only

SDC2 Recombinant monoclonal antibody, PBS Only (Detector)

Catalog Number:87000-1-PBS



Basic Information

Catalog Number:

87000-1-PBS

Source:

Rabbit

Isotype:

IgG

Immunogen Catalog Number:

EG2947

GenBank Accession Number:

NM_002998.3

GeneID (NCBI):

6383

UNIPROT ID:

P34741

Full Name:

syndecan 2

Calculated MW:

22 kDa

Purification Method:

Protein A purification

CloneNo.:

251827A12

Applications

Tested Applications:

Sandwich ELISA, Indirect ELISA

Species Specificity:

human

Background Information

Storage

Storage:

Store at -80°C.

The product is shipped with ice packs. Upon receipt, store it immediately at -80°C

Storage Buffer:

PBS only, pH7.3

For technical support and original validation data for this product please contact:

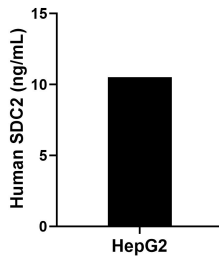
T: 4006900926

E: Proteintech-CN@ptglab.com

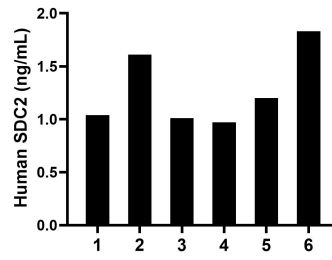
W: ptgcn.com

This product is exclusively available under Proteintech Group brand and is not available to purchase from any other manufacturer.

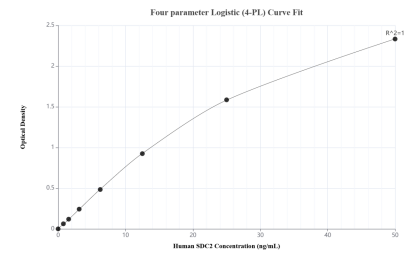
Selected Validation Data



The mean SDC2 concentration was determined to be 10.51 ng/mL in HepG2 cell extract based on a 1.20 mg/mL extract load.



Plasma of six individual healthy human donors was measured. The SDC2 concentration of detected samples was determined to be 1.28 ng/mL with a range of 1.04-1.83 ng/mL.



Sandwich ELISA standard curve of MP02814-1, Human SDC2 Recombinant Matched Antibody Pair - PBS only. 87000-2-PBS was coated to a plate as the capture antibody and incubated with serial dilutions of standard Eg2947. 87000-1-PBS was HRP conjugated as the detection antibody. Range: 0.781-50 ng/mL.