

For Research Use Only

KRR1 Recombinant monoclonal antibody, PBS Only (Detector)

Catalog Number: 86993-4-PBS



Basic Information

Catalog Number: 86993-4-PBS	GenBank Accession Number: BC026107	Purification Method: Protein A purification
Source: Rabbit	GeneID (NCBI): 11103	CloneNo.: 252034G4
Isotype: IgG	UNIPROT ID: Q13601	
Immunogen Catalog Number: AG3464	Full Name: KRR1, small subunit (SSU) processome component, homolog (yeast)	
	Calculated MW: 381 aa, 44 kDa	

Applications

Tested Applications:
Sandwich ELISA, Indirect ELISA

Species Specificity:
human

Background Information

Storage

Storage:
Store at -80°C.
The product is shipped with ice packs. Upon receipt, store it immediately at -80°C

Storage Buffer:
PBS only, pH7.3

For technical support and original validation data for this product please contact:

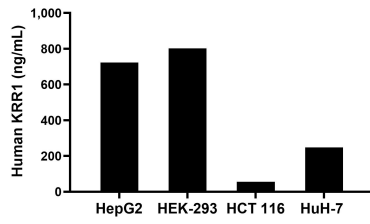
T: 4006900926

E: Proteintech-CN@ptglab.com

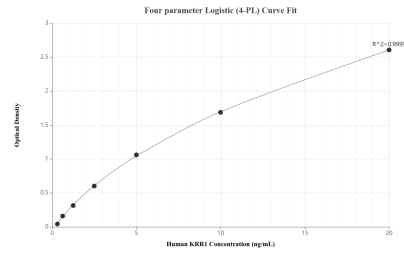
W: ptgcn.com

This product is exclusively available under Proteintech Group brand and is not available to purchase from any other manufacturer.

Selected Validation Data



The mean KRR1 concentration was determined to be 722.68 ng/mL in HepG2 cell extract based on a 1.20 mg/mL extract load, 802.60 ng/mL in HEK-293 cell extract based on a 1.20 mg/mL extract load, 56.10 ng/mL in HCT 116 cell extract based on a 1.20 mg/mL extract load and 247.22 ng/mL in HuH-7 cell extract based on a 1.20 mg/mL extract load.



Sandwich ELISA standard curve of MP02819-2, Human KRR1 Recombinant Matched Antibody Pair - PBS only. 86993-2-PBS was coated to a plate as the capture antibody and incubated with serial dilutions of standard Ag3464. 86993-4-PBS was HRP conjugated as the detection antibody. Range: 0.313-20 ng/mL.