

For Research Use Only

KRR1 Recombinant monoclonal antibody, PBS Only

Catalog Number: 86993-3-PBS



Basic Information

Catalog Number: 86993-3-PBS	GenBank Accession Number: BC026107	Purification Method: Protein A purification
Source: Rabbit	GeneID (NCBI): 11103	CloneNo.: 252034F1
Isotype: IgG	UNIPROT ID: Q13601	
Immunogen Catalog Number: AG3464	Full Name: KRR1, small subunit (SSU) processome component, homolog (yeast)	
	Calculated MW: 381 aa, 44 kDa	
	Observed MW: 46 kDa	

Applications

Tested Applications:
WB, IF/ICC, Indirect ELISA

Species Specificity:
human, mouse, rat

Background Information

KRR1 (also known as RIP-1) is a key assembly factor in the biogenesis of 40S precursor ribosomes (90S). As a rate-limiting node in ribosome biogenesis, its expression level reflects overall ribosome production activity.

Storage

Storage:
Store at -80°C.
The product is shipped with ice packs. Upon receipt, store it immediately at -80°C

Storage Buffer:
PBS only, pH7.3

For technical support and original validation data for this product please contact:

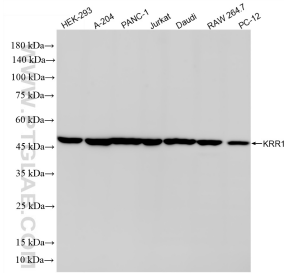
T: 4006900926

E: Proteintech-CN@ptglab.com

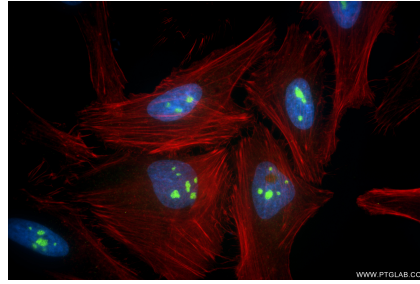
W: ptgcn.com

This product is exclusively available under Proteintech Group brand and is not available to purchase from any other manufacturer.

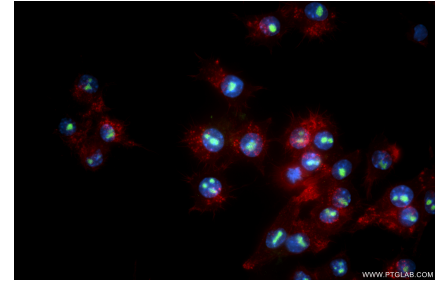
Selected Validation Data



Various lysates were subjected to SDS PAGE followed by western blot with 86993-3-RR (KRR1 antibody) at dilution of 1:10000 incubated at room temperature for 1.5 hours. This data was developed using the same antibody clone with 86993-3-PBS in a different storage buffer formulation.



Immunofluorescent analysis of (4% PFA) fixed HeLa cells using KRR1 antibody (86993-3-RR, Clone: 252034F1) at dilution of 1:1000 and CoraLite®488-Conjugated Goat Anti-Rabbit IgG(H+L) (SA00013-2), CL594-Phalloidin (red). This data was developed using the same antibody clone with 86993-3-PBS in a different storage buffer formulation.



Immunofluorescent analysis of (4% PFA) fixed RAW 264.7 cells using KRR1 antibody (86993-3-RR, Clone: 252034F1) at dilution of 1:1000 and CoraLite®488-Conjugated Goat Anti-Rabbit IgG(H+L) (SA00013-2), CL594-Phalloidin (red). This data was developed using the same antibody clone with 86993-3-PBS in a different storage buffer formulation.