

For Research Use Only

KRR1 Recombinant monoclonal antibody, PBS Only (Capture)

Catalog Number: 86993-2-PBS



Basic Information

Catalog Number:

86993-2-PBS

Source:

Rabbit

Isotype:

IgG

Immunogen Catalog Number:

AG3464

GenBank Accession Number:

BC026107

GeneID (NCBI):

11103

UNIPROT ID:

Q13601

Full Name:

KRR1, small subunit (SSU) processome component, homolog (yeast)

Calculated MW:

381 aa, 44 kDa

Purification Method:

Protein A purification

CloneNo.:

252034H4

Applications

Tested Applications:

Cytometric bead array, Sandwich ELISA, Indirect ELISA

Species Specificity:

human

Background Information

Storage

Storage:

Store at -80°C.

The product is shipped with ice packs. Upon receipt, store it immediately at -80°C

Storage Buffer:

PBS only, pH7.3

For technical support and original validation data for this product please contact:

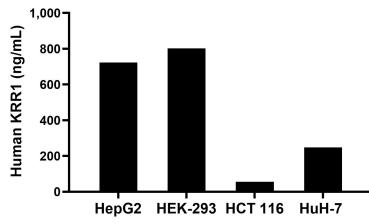
T: 4006900926

E: Proteintech-CN@ptglab.com

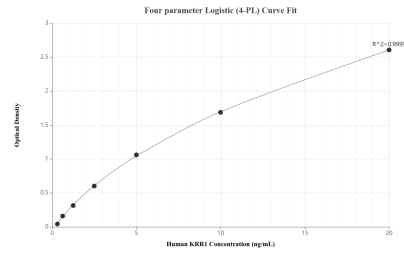
W: ptgcn.com

This product is exclusively available under Proteintech Group brand and is not available to purchase from any other manufacturer.

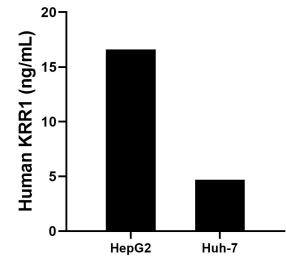
Selected Validation Data



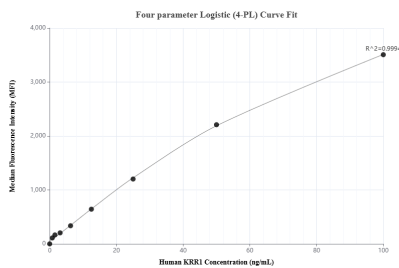
The mean KRR1 concentration was determined to be 722.68 ng/mL in HepG2 cell extract based on a 1.20 mg/mL extract load, 802.60 ng/mL in HEK-293 cell extract based on a 1.20 mg/mL extract load, 56.10 ng/mL in HCT 116 cell extract based on a 1.20 mg/mL extract load and 247.22 ng/mL in HuH-7 cell extract based on a 1.20 mg/mL extract load.



Sandwich ELISA standard curve of MP02819-2, Human KRR1 Recombinant Matched Antibody Pair - PBS only. 86993-2-PBS was coated to a plate as the capture antibody and incubated with serial dilutions of standard Ag3464. 86993-4-PBS was HRP conjugated as the detection antibody. Range: 0.313-20 ng/mL.



The mean KRR1 concentration was determined to be 16.6 ng/mL in HepG2 cell extract based on a 1.2 mg/mL extract load, 4.7 ng/mL in Huh-7 cell extract based on a 1.2 mg/mL extract load.



Cytometric bead array standard curve of MP02819-1, KRR1 Recombinant Matched Antibody Pair, PBS Only. Capture antibody: 86993-2-PBS. Detection antibody: 86993-1-PBS. Standard: Ag3464. Range: 0.781-100 ng/mL.