

For Research Use Only

# RPS6KB2 Recombinant monoclonal antibody, PBS Only (Capture)

Catalog Number: 86983-3-PBS



## Basic Information

Catalog Number:

86983-3-PBS

Source:

Rabbit

Isotype:

IgG

Immunogen Catalog Number:

AG7371

GenBank Accession Number:

BC000094

GeneID (NCBI):

6199

UNIPROT ID:

Q9UBS0

Full Name:

ribosomal protein S6 kinase, 70kDa, polypeptide 2

Calculated MW:

53 kDa

Purification Method:

Protein A purification

CloneNo.:

252089E1

## Applications

Tested Applications:

Sandwich ELISA, Indirect ELISA

Species Specificity:

human

## Background Information

### Storage

Storage:

Store at -80°C.

**The product is shipped with ice packs. Upon receipt, store it immediately at -80°C**

Storage Buffer:

PBS only, pH7.3

For technical support and original validation data for this product please contact:

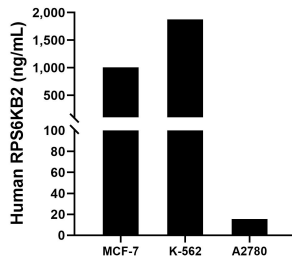
T: 4006900926

E: [Proteintech-CN@ptglab.com](mailto:Proteintech-CN@ptglab.com)

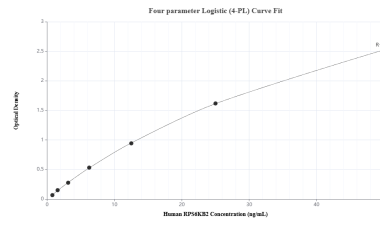
W: [ptgcn.com](http://ptgcn.com)

**This product is exclusively available under Proteintech Group brand and is not available to purchase from any other manufacturer.**

## Selected Validation Data



The mean RPS6KB2 concentration was determined to be 1,008.41 ng/mL in MCF-7 cell extract based on a 1.2 mg/mL extract load, 1,876.10 ng/mL in K-562 cell extract based on a 1.2 mg/mL extract load and 15.50 ng/mL in A2780 cell extract based on a 1.2 mg/mL extract load.



Sandwich ELISA standard curve of MP02968-1, Human RPS6KB2 Recombinant Matched Antibody Pair - PBS only. 86983-3-PBS was coated to a plate as the capture antibody and incubated with serial dilutions of standard Ag7371. 86983-2-PBS was HRP conjugated as the detection antibody. Range: 0.78-50 ng/mL