

For Research Use Only

RPS6KB2 Recombinant monoclonal antibody, PBS Only (Detector)

Catalog Number: 86983-2-PBS



Basic Information

Catalog Number:

86983-2-PBS

Source:

Rabbit

Isotype:

IgG

Immunogen Catalog Number:

AG7371

GenBank Accession Number:

BC000094

GeneID (NCBI):

6199

UNIPROT ID:

Q9UBS0

Full Name:

ribosomal protein S6 kinase, 70kDa, polypeptide 2

Calculated MW:

53 kDa

Purification Method:

Protein A purification

CloneNo.:

252089D4

Applications

Tested Applications:

Sandwich ELISA, Indirect ELISA

Species Specificity:

human

Background Information

Storage

Storage:

Store at -80°C.

The product is shipped with ice packs. Upon receipt, store it immediately at -80°C

Storage Buffer:

PBS only, pH7.3

For technical support and original validation data for this product please contact:

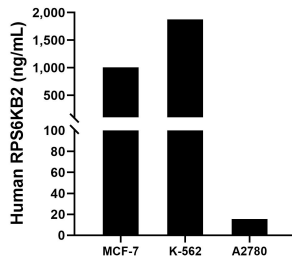
T: 4006900926

E: Proteintech-CN@ptglab.com

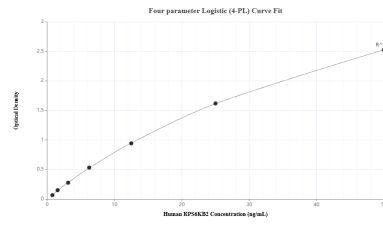
W: ptgcn.com

This product is exclusively available under Proteintech Group brand and is not available to purchase from any other manufacturer.

Selected Validation Data



The mean RPS6KB2 concentration was determined to be 1,008.41 ng/mL in MCF-7 cell extract based on a 1.2 mg/mL extract load, 1,876.10 ng/mL in K-562 cell extract based on a 1.2 mg/mL extract load and 15.50 ng/mL in A2780 cell extract based on a 1.2 mg/mL extract load.



Sandwich ELISA standard curve of MP02968-1, Human RPS6KB2 Recombinant Matched Antibody Pair - PBS only. 86983-3-PBS was coated to a plate as the capture antibody and incubated with serial dilutions of standard Ag7371. 86983-2-PBS was HRP conjugated as the detection antibody. Range: 0.78-50 ng/mL