

For Research Use Only

TIP30 Recombinant monoclonal antibody, PBS Only (Detector)

Catalog Number:86972-1-PBS



Basic Information

Catalog Number: 86972-1-PBS	GenBank Accession Number: BC002439	Purification Method: Protein A purification
Source: Rabbit	GeneID (NCBI): 10553	CloneNo.: 252091A12
Isotype: IgG	UNIPROT ID: Q9BUP3	
Immunogen Catalog Number: AG0353	Full Name: HIV-1 Tat interactive protein 2, 30kDa	
	Calculated MW: 27 kDa	
	Observed MW: 28 kDa, 32 kDa	

Applications

Tested Applications:
WB, Cytometric bead array, Indirect ELISA

Species Specificity:
human

Background Information

TIP30, namely HTATIP2 or CC3, was firstly discovered in small cell lung carcinoma, using differential analyses between highly metastatic human variant cells and less metastatic classic cells. TIP30 was found to be downregulated in various tumors and is considered to be a tumor suppressor due to its pro-apoptotic activity and its anti-metastatic and anti-angiogenic capacities.

Storage

Storage:
Store at -80°C.
The product is shipped with ice packs. Upon receipt, store it immediately at -80°C

Storage Buffer:
PBS only, pH7.3

For technical support and original validation data for this product please contact:

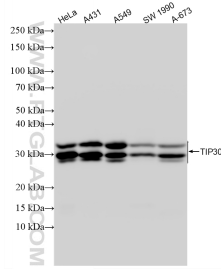
T: 4006900926

E: Proteintech-CN@ptglab.com

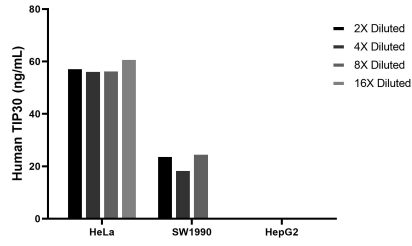
W: ptgcn.com

This product is exclusively available under Proteintech Group brand and is not available to purchase from any other manufacturer.

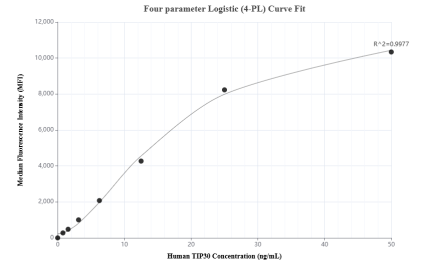
Selected Validation Data



Various lysates were subjected to SDS PAGE followed by western blot with 86972-1-RR (TIP30 antibody) at dilution of 1:10000 incubated at room temperature for 1.5 hours. This data was developed using the same antibody clone with 86972-1-PBS in a different storage buffer formulation.



The mean TIP30 concentration was determined to be 58.3 ng/mL in HeLa cell extract based on a 1.2 mg/mL extract load, 22.8 ng/mL in SW1990 cell extract based on a 1.8 mg/mL extract load, HepG2 cell extract were served as a negative control.



Cytometric bead array standard curve of MP02818-1, TIP30 Recombinant Matched Antibody Pair, PBS Only. Capture antibody: 86972-2-PBS. Detection antibody: 86972-1-PBS. Standard: Ag0353. Range: 0.781-50 ng/mL.