

For Research Use Only

FIGNL1 Recombinant monoclonal antibody

Catalog Number:86971-1-RR



Basic Information

Catalog Number: 86971-1-RR	GenBank Accession Number: BC051867	Purification Method: Protein A purification
Source: Rabbit	GeneID (NCBI): 63979	CloneNo.: 252109F9
Isotype: IgG	UNIPROT ID: Q6PIW4	Recommended Dilutions: WB: 1:2000-1:10000
Immunogen Catalog Number: AG11709	Full Name: fidgetin-like 1	
	Calculated MW: 674 aa, 74 kDa	
	Observed MW: 75 kDa	

Applications

Tested Applications: WB, ELISA	Positive Controls: WB : U2OS cells, mouse testis tissue, rat testis tissue, HuH-7 cells
Species Specificity: human, mouse, rat	

Background Information

Fidgetin-like 1 (FIGNL1), a subfamily member of ATPases, is associated with diverse cellular activities (AAA proteins). FIGNL1 is involved in DNA repair. FIGNL1 plays a crucial role in the occurrence and development of malignant tumors. FIGNL1 participates in the prognosis, promoter methylation, and immune infiltrates in KIRP, LGG, and LIHC (PMID: 35232348).

Storage

Storage:
Store at -20°C. Stable for one year after shipment.
Storage Buffer:
PBS with 0.02% sodium azide and 50% glycerol, pH7.3
Aliquoting is unnecessary for -20°C storage

For technical support and original validation data for this product please contact:

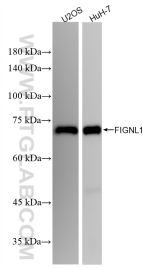
T: 4006900926

E: Proteintech-CN@ptglab.com

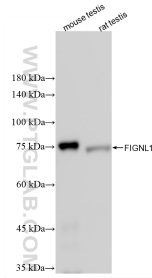
W: ptgcn.com

This product is exclusively available under Proteintech Group brand and is not available to purchase from any other manufacturer.

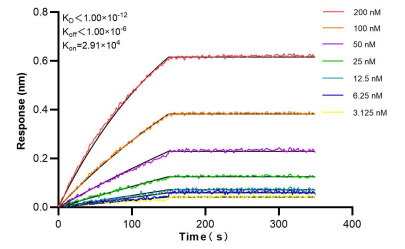
Selected Validation Data



Various lysates were subjected to SDS PAGE followed by western blot with 86971-1-RR (FIGNL1 antibody) at dilution of 1:5000 incubated at room temperature for 1.5 hours.



Various lysates were subjected to SDS PAGE followed by western blot with 86971-1-RR (FIGNL1 antibody) at dilution of 1:5000 incubated at room temperature for 1.5 hours.



Biolayer interferometry (BLI) kinetic assays of 86971-1-RR against Human FIGNL1 were performed. The affinity constant is below 1 pM.