

For Research Use Only

# FIGNL1 Recombinant monoclonal antibody, PBS Only

Catalog Number: 86971-1-PBS



## Basic Information

<b>Catalog Number:</b> 86971-1-PBS	<b>GenBank Accession Number:</b> BC051867	<b>Purification Method:</b> Protein A purification
<b>Source:</b> Rabbit	<b>GeneID (NCBI):</b> 63979	<b>CloneNo.:</b> 252109F9
<b>Isotype:</b> IgG	<b>UNIPROT ID:</b> Q6PIW4	
<b>Immunogen Catalog Number:</b> AG11709	<b>Full Name:</b> fidgetin-like 1	
	<b>Calculated MW:</b> 674 aa, 74 kDa	
	<b>Observed MW:</b> 75 kDa	

## Applications

**Tested Applications:**  
WB, Indirect ELISA

**Species Specificity:**  
human, mouse, rat

## Background Information

Fidgetin-like 1 (FIGNL1), a subfamily member of ATPases, is associated with diverse cellular activities (AAA proteins). FIGNL1 is involved in DNA repair. FIGNL1 plays a crucial role in the occurrence and development of malignant tumors. FIGNL1 participates in the prognosis, promoter methylation, and immune infiltrates in KIRP, LGG, and LIHC (PMID: 35232348).

## Storage

**Storage:**  
Store at -80°C.  
**The product is shipped with ice packs. Upon receipt, store it immediately at -80°C**

**Storage Buffer:**  
PBS only, pH7.3

For technical support and original validation data for this product please contact:

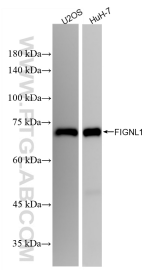
T: 4006900926

E: [Proteintech-CN@ptglab.com](mailto:Proteintech-CN@ptglab.com)

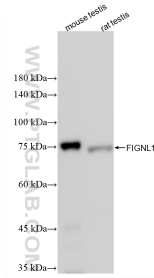
W: [ptgcn.com](http://ptgcn.com)

**This product is exclusively available under Proteintech Group brand and is not available to purchase from any other manufacturer.**

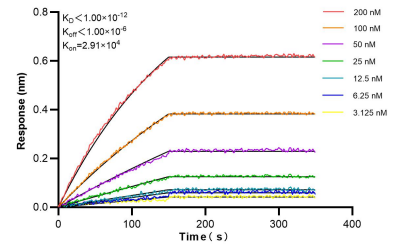
## Selected Validation Data



Various lysates were subjected to SDS PAGE followed by western blot with 86971-1-RR (FIGNL1 antibody) at dilution of 1:5000 incubated at room temperature for 1.5 hours. This data was developed using the same antibody clone with 86971-1-PBS in a different storage buffer formulation.



Various lysates were subjected to SDS PAGE followed by western blot with 86971-1-RR (FIGNL1 antibody) at dilution of 1:5000 incubated at room temperature for 1.5 hours. This data was developed using the same antibody clone with 86971-1-PBS in a different storage buffer formulation.



Biolayer interferometry (BLI) kinetic assays of 86971-1-RR against Human FIGNL1 were performed. The affinity constant is below 1 pM.