

For Research Use Only

SDCBP Recombinant monoclonal antibody, PBS Only (Capture)

Catalog Number: 86968-2-PBS



Basic Information

Catalog Number: 86968-2-PBS	GenBank Accession Number: BC113674	Purification Method: Protein A purification
Source: Rabbit	GeneID (NCBI): 6386	CloneNo.: 252107G12
Isotype: IgG	UNIPROT ID: O00560	
Immunogen Catalog Number: AG18078	Full Name: syndecan binding protein (syntenin)	
	Calculated MW: 298 aa, 32 kDa	

Applications

Tested Applications:
Sandwich ELISA, Indirect ELISA

Species Specificity:
human

Background Information

Storage

Storage:
Store at -80°C.
The product is shipped with ice packs. Upon receipt, store it immediately at -80°C

Storage Buffer:
PBS only, pH7.3

For technical support and original validation data for this product please contact:

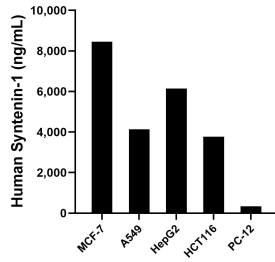
T: 4006900926

E: Proteintech-CN@ptglab.com

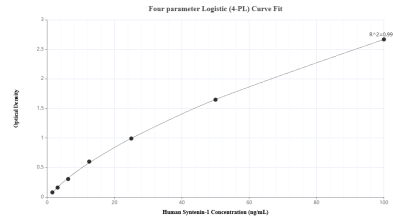
W: ptgcn.com

This product is exclusively available under Proteintech Group brand and is not available to purchase from any other manufacturer.

Selected Validation Data



The mean Syntenin-1 concentration was determined to be 8,459.69 ng/mL in MCF-7 cell extract based on a 1.2 mg/mL extract load, 4,141.00 ng/mL in A549 cell extract based on a 1.2 mg/mL extract load, 6,144.14 ng/mL in HepG2 cell extract based on a 1.2 mg/mL extract load, 3,765.64 ng/mL in HCT 116 cell extract based on a 1.3 mg/mL extract load and 339.31 ng/mL in PC-12 cell extract based on a 1.4 mg/mL extract load.



Sandwich ELISA standard curve of MP02969-1, Human Syntenin-1 Recombinant Matched Antibody Pair - PBS only. 86968-2-PBS was coated to a plate as the capture antibody and incubated with serial dilutions of standard Ag18078. 86968-1-PBS was HRP conjugated as the detection antibody. Range: 1.56-100 ng/mL