

For Research Use Only

Syntenin-1 Recombinant monoclonal antibody, PBS Only (Detector)

Catalog Number: 86968-1-PBS



Basic Information

Catalog Number: 86968-1-PBS	GenBank Accession Number: BC113674	Purification Method: Protein A purification
Source: Rabbit	GeneID (NCBI): 6386	CloneNo.: 252107H1
Isotype: IgG	UNIPROT ID: O00560	
Immunogen Catalog Number: AG18078	Full Name: syndecan binding protein (syntenin)	
	Calculated MW: 298 aa, 32 kDa	
	Observed MW: 32 kDa	

Applications

Tested Applications:
WB, IHC, IF/ICC, IP, Sandwich ELISA, Indirect ELISA

Species Specificity:
human

Background Information

Syntenin-1, also known as SDCBP (syndecan binding protein) and MDA-9 (melanoma differentiation-associated protein 9), was initially identified as a molecule linking syndecan-mediated signaling to the cytoskeleton. Syntenin-1 is a PDZ-domain-containing molecule that has many interaction partners, and regulates transmembrane-receptor trafficking, cell adhesion, tumor-cell metastasis and neuronal-synapse function. Syntenin-1 is primarily localized to membrane-associated adherens junctions and focal adhesions but is also found at the endoplasmic reticulum and nucleus.

Storage

Storage:
Store at -80°C.
The product is shipped with ice packs. Upon receipt, store it immediately at -80°C

Storage Buffer:
PBS only, pH7.3

For technical support and original validation data for this product please contact:

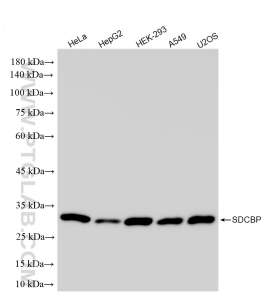
T: 4006900926

E: Proteintech-CN@ptglab.com

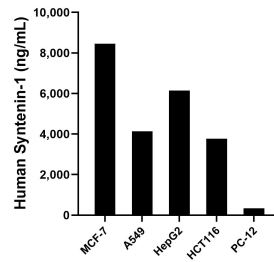
W: ptgcn.com

This product is exclusively available under Proteintech Group brand and is not available to purchase from any other manufacturer.

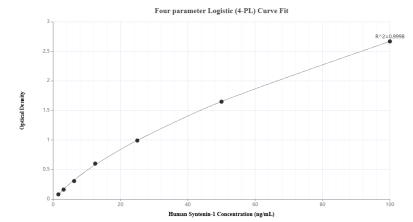
Selected Validation Data



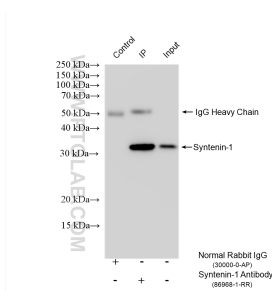
Various lysates were subjected to SDS PAGE followed by western blot with 86968-1-RR (Syntenin-1 antibody) at dilution of 1:5000 incubated at room temperature for 1.5 hours. This data was developed using the same antibody clone with 86968-1-PBS in a different storage buffer formulation.



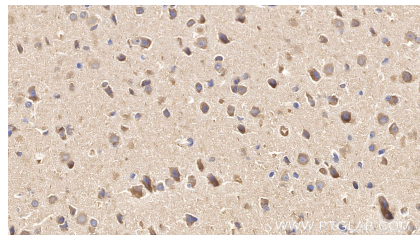
The mean Syntenin-1 concentration was determined to be 8,459.69 ng/mL in MCF-7 cell extract based on a 1.2 mg/mL extract load, 4,141.00 ng/mL in A549 cell extract based on a 1.2 mg/mL extract load, 6,144.14 ng/mL in HepG2 cell extract based on a 1.2 mg/mL extract load, 3,765.64 ng/mL in HCT 116 cell extract based on a 1.3 mg/mL extract load and 339.31 ng/mL in PC-12 cell extract based on a 1.4 mg/mL extract load.



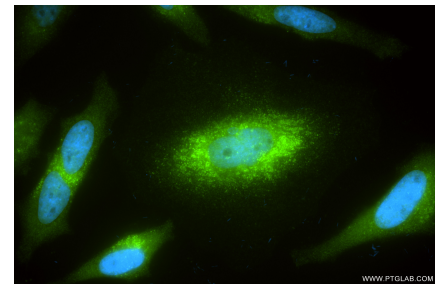
Sandwich ELISA standard curve of MP02969-1, Human Syntenin-1 Recombinant Matched Antibody Pair - PBS only. 86968-2-PBS was coated to a plate as the capture antibody and incubated with serial dilutions of standard Ag18078. 86968-1-PBS was HRP conjugated as the detection antibody. Range: 1.56-100 ng/mL



IP result of anti-Syntenin-1 (IP:86968-1-RR, 4ug; Detection:86968-1-RR 1:1000) with HeLa cells lysate 1480 ug. This data was developed using the same antibody clone with 86968-1-PBS in a different storage buffer formulation.



Immunohistochemical analysis of paraffin-embedded mouse brain tissue slide using 86968-1-RR (Syntenin-1 antibody) at dilution of 1:1000 (under 40x lens). Heat mediated antigen retrieval with Tris-EDTA buffer (pH 9.0). This data was developed using the same antibody clone with 86968-1-PBS in a different storage buffer formulation.



Immunofluorescent analysis of (4% PFA) fixed HeLa cells using Syntenin-1 antibody (86968-1-RR, Clone: 252107H1) at dilution of 1:400 and CoraLite@488-Conjugated Goat Anti-Rabbit IgG(H+L) (SA00013-2). This data was developed using the same antibody clone with 86968-1-PBS in a different storage buffer formulation.