

For Research Use Only

# Mouse Sema5a Recombinant monoclonal antibody, PBS Only (Capture)

Catalog Number: 86961-2-PBS



## Basic Information

Catalog Number:

86961-2-PBS

Source:

Rabbit

Isotype:

IgG

Immunogen Catalog Number:

EG2689

GenBank Accession Number:

NM\_009154.2

GeneID (NCBI):

20356

UNIPROT ID:

Q3UPZO

Full Name:

sema domain, seven thrombospondin repeats (type 1 and type 1-like), transmembrane domain (TM) and short cytoplasmic domain, (semaphorin) 5A

Calculated MW:

120 kDa

Purification Method:

Protein A purification

CloneNo.:

251962D8

## Applications

Tested Applications:

Cytometric bead array, Indirect ELISA

Species Specificity:

mouse

## Background Information

### Storage

Storage:

Store at -80°C.

**The product is shipped with ice packs. Upon receipt, store it immediately at -80°C**

Storage Buffer:

PBS only, pH7.3

For technical support and original validation data for this product please contact:

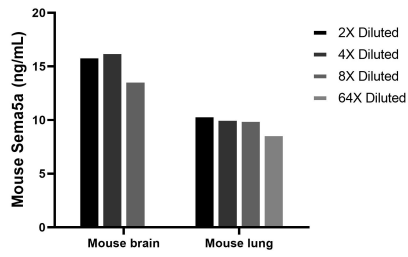
T: 4006900926

E: [Proteintech-CN@ptglab.com](mailto:Proteintech-CN@ptglab.com)

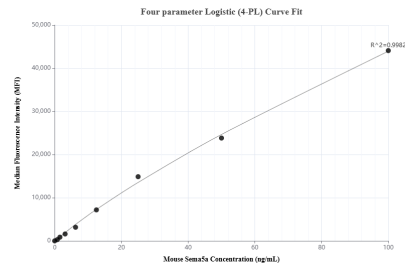
W: [ptgcn.com](http://ptgcn.com)

**This product is exclusively available under Proteintech Group brand and is not available to purchase from any other manufacturer.**

## Selected Validation Data



The mean Sema5a concentration was determined to be 15.4 ng/mL in mouse brain tissue extract based on a 6.3 mg/mL extract load, 9.9 ng/mL in mouse lung tissue extract based on a 5.3 mg/mL extract load.



Cytometric bead array standard curve of MP02795-1, MOUSE Sema5a Recombinant Matched Antibody Pair, PBS Only. Capture antibody: 86961-2-PBS. Detection antibody: 86961-1-PBS. Standard: Eg2689. Range: 0.781-100 ng/mL.