

For Research Use Only

# JAM3 Recombinant monoclonal antibody, PBS Only (Detector)

Catalog Number:86960-3-PBS



## Basic Information

Catalog Number:  
86960-3-PBS

Source:  
Rabbit

Isotype:  
IgG

Immunogen Catalog Number:  
EG6611

GenBank Accession Number:  
NM\_032801.5

GeneID (NCBI):  
83700

UNIPROT ID:  
Q9BX67-1

Full Name:  
junctional adhesion molecule 3

Calculated MW:  
35 kDa

Purification Method:  
Protein A purification

CloneNo.:  
251954E9

## Applications

Tested Applications:  
Sandwich ELISA, Indirect ELISA

Species Specificity:  
human

## Background Information

### Storage

Storage:  
Store at -80°C.

The product is shipped with ice packs. Upon receipt, store it immediately at -80°C

Storage Buffer:  
PBS only, pH7.3

For technical support and original validation data for this product please contact:

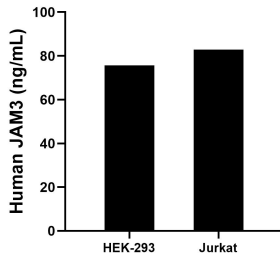
T: 4006900926

E: [Proteintech-CN@ptglab.com](mailto:Proteintech-CN@ptglab.com)

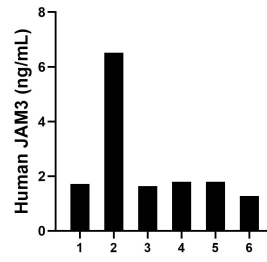
W: [ptgcn.com](http://ptgcn.com)

This product is exclusively available under Proteintech Group brand and is not available to purchase from any other manufacturer.

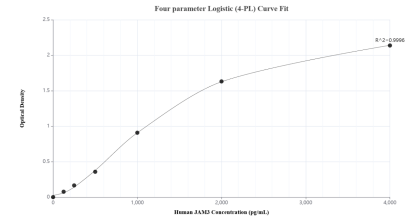
## Selected Validation Data



The mean JAM3 concentration was determined to be 75.6 ng/mL in HEK-293 cell extract based on a 1.2 mg/mL extract load and 82.8 ng/mL in Jurkat cell extract based on a 1.2 mg/mL extract load.



Serum of eight individual healthy human donors was measured. The JAM3 concentration of detected samples was determined to be 2.5 ng/mL with a range of 1.3-6.5 ng/mL.



Sandwich ELISA standard curve of MP02796-2, Human JAM3 Recombinant Matched Antibody Pair - PBS only. 86960-2-PBS was coated to a plate as the capture antibody and incubated with serial dilutions of standard Eg6611. 86960-3-PBS was HRP conjugated as the detection antibody. Range: 125--4000 pg/mL.