

For Research Use Only

JAM3 Recombinant monoclonal antibody, PBS Only (Capture)

Catalog Number: 86960-2-PBS



Basic Information

Catalog Number: 86960-2-PBS	GenBank Accession Number: NM_032801.5	Purification Method: Protein A purification
Source: Rabbit	GeneID (NCBI): 83700	CloneNo.: 251954A10
Isotype: IgG	UNIPROT ID: Q9BX67-1	
Immunogen Catalog Number: EG6611	Full Name: junctional adhesion molecule 3	
	Calculated MW: 35 kDa	

Applications

Tested Applications:
Cytometric bead array, Sandwich ELISA, Indirect ELISA

Species Specificity:
human

Background Information

Storage

Storage:
Store at -80°C.
The product is shipped with ice packs. Upon receipt, store it immediately at -80°C

Storage Buffer:
PBS only, pH7.3

For technical support and original validation data for this product please contact:

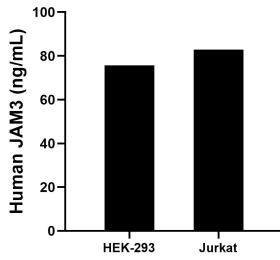
T: 4006900926

E: Proteintech-CN@ptglab.com

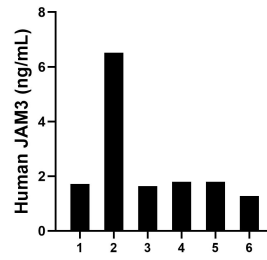
W: ptgcn.com

This product is exclusively available under Proteintech Group brand and is not available to purchase from any other manufacturer.

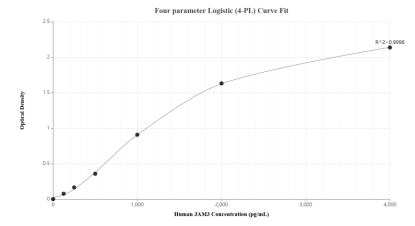
Selected Validation Data



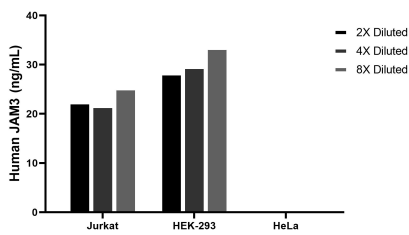
The mean JAM3 concentration was determined to be 75.6 ng/mL in HEK-293 cell extract based on a 1.2 mg/mL extract load and 82.8 ng/mL in Jurkat cell extract based on a 1.2 mg/mL extract load.



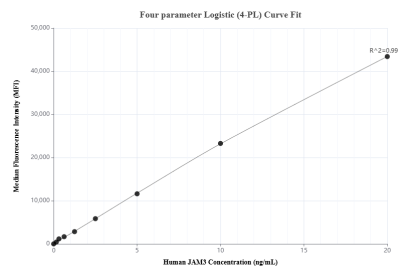
Serum of eight individual healthy human donors was measured. The JAM3 concentration of detected samples was determined to be 2.5 ng/mL with a range of 1.3-6.5 ng/mL.



Sandwich ELISA standard curve of MP02796-2, Human JAM3 Recombinant Matched Antibody Pair - PBS only. 86960-2-PBS was coated to a plate as the capture antibody and incubated with serial dilutions of standard Eg6611. 86960-3-PBS was HRP conjugated as the detection antibody. Range: 125--4000 pg/mL.



The mean JAM3 concentration was determined to be 23.0 ng/mL in Jurkat cell extract based on a 1.2 mg/mL extract load, 30.4 ng/mL in HEK-293 cell extract based on a 1.2 mg/mL extract load, HeLa cell extract were served as a negative control.



Cytometric bead array standard curve of MP02796-1, JAM3 Recombinant Matched Antibody Pair, PBS Only. Capture antibody: 86960-2-PBS. Detection antibody: 86960-1-PBS. Standard: Eg6611. Range: 0.156-20 ng/mL.