

For Research Use Only

# Filamin A Recombinant monoclonal antibody

Catalog Number:86959-3-RR



## Basic Information

<b>Catalog Number:</b> 86959-3-RR	<b>GenBank Accession Number:</b> BC014654	<b>Purification Method:</b> Protein A purification
<b>Source:</b> Rabbit	<b>GeneID (NCBI):</b> 2316	<b>CloneNo.:</b> 252084C12
<b>Isotype:</b> IgG	<b>UNIPROT ID:</b> P21333	<b>Recommended Dilutions:</b> WB: 1:5000-1:50000 IF/ICC: 1:500-1:2000
<b>Immunogen Catalog Number:</b> AG1581	<b>Full Name:</b> filamin A, alpha (actin binding protein 280)	
	<b>Calculated MW:</b> 2647 aa, 280 kDa	
	<b>Observed MW:</b> 280 kDa	

## Applications

<b>Tested Applications:</b> WB, IF/ICC, ELISA	<b>Positive Controls:</b>
<b>Species Specificity:</b> human, mouse	<b>WB :</b> HepG2 cells, Jurkat cells, MCF-7 cells, NIH/3T3 cells <b>IF/ICC :</b> HeLa cells,

## Background Information

FLNA encodes a 280 kDa widely expressed actin binding protein called filamin A which can crosslinks actin filaments and links actin filaments to membrane glycoproteins to form a three-dimensional network (PMID:29931263). And filamin A could interact with many other proteins, involved in receptor activation, cell migration and adhesion, cell proliferation, inflammation and tumorigenesis, studies have been reported that FLNA overexpressed in multiple types of tumors, suggesting FLNA may involved in cancer aggressiveness(PMID:29100390). What's more, FLNA is an causative gene of periventricular nodular heterotopia (PNH) (PMID: 29062687)

## Storage

**Storage:**  
Store at -20°C. Stable for one year after shipment.  
**Storage Buffer:**  
PBS with 0.02% sodium azide and 50% glycerol, pH7.3  
**Aliquoting is unnecessary for -20°C storage**

For technical support and original validation data for this product please contact:

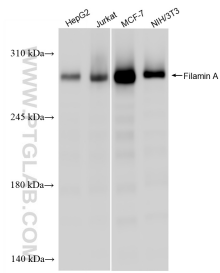
T: 4006900926

E: Proteintech-CN@ptglab.com

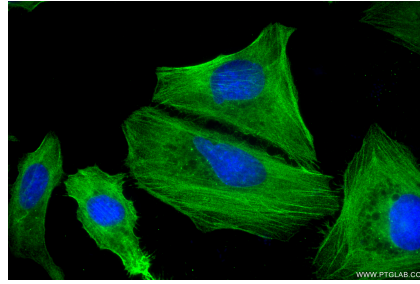
W: ptgcn.com

**This product is exclusively available under Proteintech Group brand and is not available to purchase from any other manufacturer.**

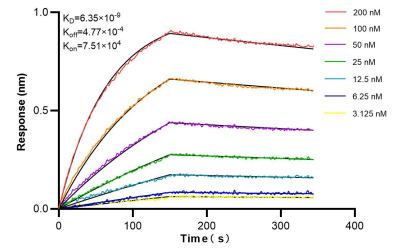
## Selected Validation Data



Various lysates were subjected to SDS PAGE followed by western blot with 86959-3-RR (FLNA antibody) at dilution of 1:10000 incubated at room temperature for 1.5 hours.



Immunofluorescent analysis of (-20°C Methanol) fixed HeLa cells using Filamin A antibody (86959-3-RR, Clone: 252084C12) at dilution of 1:1000 and CoraLite® 488-Conjugated Goat Anti-Rabbit IgG(H+L) (SA00013-2).



Biolayer interferometry (BLI) kinetic assays of 86959-3-RR against Human Filamin A were performed. The affinity constant is 6.35 nM.