

For Research Use Only

CYP46A1 Recombinant monoclonal antibody, PBS Only

Catalog Number: 86957-1-PBS



Basic Information

Catalog Number:

86957-1-PBS

Source:

Rabbit

Isotype:

IgG

Immunogen Catalog Number:

AG16786

GenBank Accession Number:

BC022539

GeneID (NCBI):

10858

UNIPROT ID:

Q9Y6A2

Full Name:

cytochrome P450, family 46, subfamily A, polypeptide 1

Calculated MW:

500 aa, 57 kDa

Observed MW:

57 kDa

Purification Method:

Protein A purification

CloneNo.:

250155G8

Applications

Tested Applications:

WB, IHC, Indirect ELISA

Species Specificity:

human, mouse, rat

Background Information

Cytochrome P450 46A1 (CYP46A1), also named as CYP46, P450 46A1, CH24H and Cholesterol 24-hydroxylase, belongs to the cytochrome P450 family. CYP46A1 is a central nervous system-specific enzyme, and can freely cross the blood-brain barrier and be degraded in the liver. It is involved in the turnover of cholesterol. It converts cholesterol into 24S-hydroxycholesterol and, to a lesser extent, 25-hydroxycholesterol. CYP46A1 is significantly upregulated in hepatic lymphomyeloid cells compared with ESCs. (PMID:20039312)

Storage

Storage:

Store at -80°C.

The product is shipped with ice packs. Upon receipt, store it immediately at -80°C

Storage Buffer:

PBS only, pH7.3

For technical support and original validation data for this product please contact:

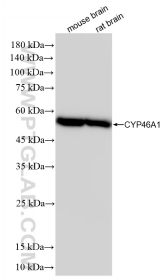
T: 4006900926

E: Proteintech-CN@ptglab.com

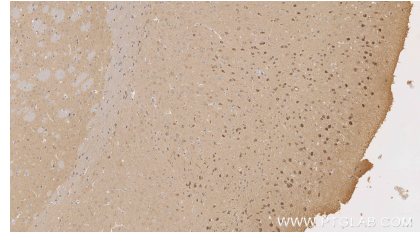
W: ptgcn.com

This product is exclusively available under Proteintech Group brand and is not available to purchase from any other manufacturer.

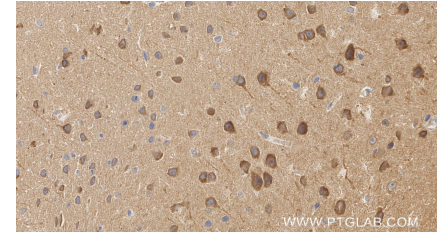
Selected Validation Data



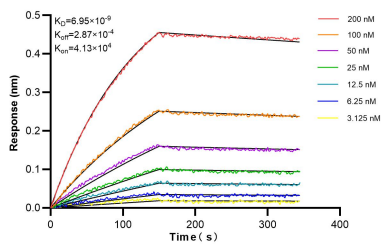
Various lysates were subjected to SDS PAGE followed by western blot with 86957-1-RR (CYP46A1 antibody) at dilution of 1:10000 incubated at room temperature for 1.5 hours. This data was developed using the same antibody clone with 86957-1-PBS in a different storage buffer formulation.



Immunohistochemical analysis of paraffin-embedded mouse brain tissue slide using 86957-1-RR (CYP46A1 antibody) at dilution of 1:3000 (under 10x lens). Heat mediated antigen retrieval with Tris-EDTA buffer (pH 9.0). This data was developed using the same antibody clone with 86957-1-PBS in a different storage buffer formulation.



Immunohistochemical analysis of paraffin-embedded mouse brain tissue slide using 86957-1-RR (CYP46A1 antibody) at dilution of 1:3000 (under 40x lens). Heat mediated antigen retrieval with Tris-EDTA buffer (pH 9.0). This data was developed using the same antibody clone with 86957-1-PBS in a different storage buffer formulation.



Biolayer interferometry (BLI) kinetic assays of 86957-1-RR against Human CYP46A1 were performed. The affinity constant is 6.95 nM.