

For Research Use Only

Cathepsin S Recombinant monoclonal antibody

Catalog Number: 86948-1-RR



Basic Information

Catalog Number: 86948-1-RR	GenBank Accession Number: BC002642	Purification Method: Protein A purification
Source: Rabbit	GeneID (NCBI): 1520	CloneNo.: 252053B3
Isotype: IgG	UNIPROT ID: P25774	Recommended Dilutions: WB: 1:5000-1:50000 IF/ICC: 1:50-1:500
Immunogen Catalog Number: AG25881	Full Name: cathepsin S	
	Calculated MW: 37 kDa	
	Observed MW: 25 kDa, 37 kDa	

Applications

Tested Applications: WB, IF/ICC, ELISA	Positive Controls: WB : U-87 MG cells, THP-1 cells
Species Specificity: human	IF/ICC : THP-1 cells,

Background Information

Cathepsin S (CTSS) is a cysteine protease that plays an important role in extracellular matrix degradation and remodeling, antigen presentation, inflammation, and angiogenesis; it has been identified as a radiation response gene. In malignant tumors, CTSS induces tumor proliferation, invasion and metastasis through various mechanisms. CTSS proteins could be detected in two forms, pro-CTSS (35-37 kDa) and active CTSS (25 kDa) (PMID: 30006610, PMID: 34208434). And in this publication, it was also reported that active CTSS was expressed at higher levels than pro-CTSS in the lysate (PMID: 34208434).

Storage

Storage:
Store at -20°C. Stable for one year after shipment.
Storage Buffer:
PBS with 0.02% sodium azide and 50% glycerol, pH7.3
Aliquoting is unnecessary for -20°C storage

For technical support and original validation data for this product please contact:

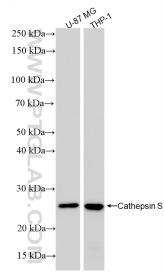
T: 4006900926

E: Proteintech-CN@ptglab.com

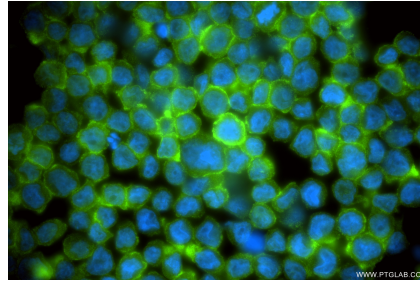
W: ptgcn.com

This product is exclusively available under Proteintech Group brand and is not available to purchase from any other manufacturer.

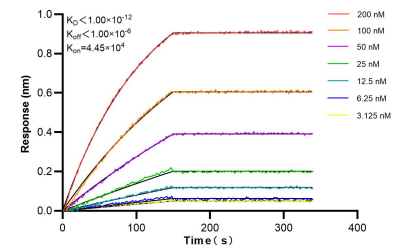
Selected Validation Data



Various lysates were subjected to SDS PAGE followed by western blot with 86948-1-RR (Cathepsin S antibody) at dilution of 1:10000 incubated at room temperature for 1.5 hours.



Immunofluorescent analysis of (4% PFA) fixed THP-1 cells using Cathepsin S antibody (86948-1-RR, Clone: 252053B3) at dilution of 1:200 and CoraLite® 488-Conjugated Goat Anti-Rabbit IgG(H+L) (SA00013-2).



Bi-layer interferometry (BLI) kinetic assays of 86948-1-RR against Human Cathepsin S were performed. The affinity constant is below 1 pM.