

For Research Use Only

# Cathepsin S Recombinant monoclonal antibody, PBS Only

Catalog Number: 86948-1-PBS



## Basic Information

Catalog Number:

86948-1-PBS

Source:

Rabbit

Isotype:

IgG

Immunogen Catalog Number:

AG25881

GenBank Accession Number:

BC002642

GeneID (NCBI):

1520

UNIPROT ID:

P25774

Full Name:

cathepsin S

Calculated MW:

37 kDa

Observed MW:

25 kDa, 37 kDa

Purification Method:

Protein A purification

CloneNo.:

252053B3

## Applications

Tested Applications:

WB, IF/ICC, Indirect ELISA

Species Specificity:

human

## Background Information

Cathepsin S (CTSS) is a cysteine protease that plays an important role in extracellular matrix degradation and remodeling, antigen presentation, inflammation, and angiogenesis; it has been identified as a radiation response gene. In malignant tumors, CTSS induces tumor proliferation, invasion and metastasis through various mechanisms. CTSS proteins could be detected in two forms, pro-CTSS (35-37 kDa) and active CTSS (25 kDa) (PMID: 30006610, PMID: 34208434). And in this publication, it was also reported that active CTSS was expressed at higher levels than pro-CTSS in the lysate (PMID: 34208434).

## Storage

Storage:

Store at -80°C.

**The product is shipped with ice packs. Upon receipt, store it immediately at -80°C**

Storage Buffer:

PBS only, pH7.3

For technical support and original validation data for this product please contact:

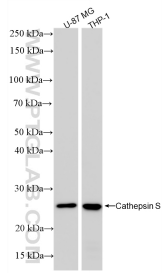
T: 4006900926

E: [Proteintech-CN@ptglab.com](mailto:Proteintech-CN@ptglab.com)

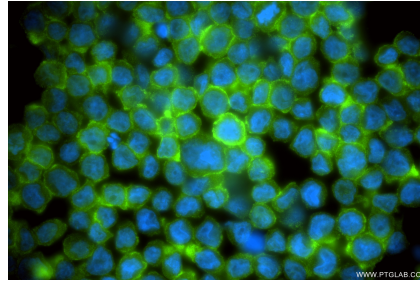
W: [ptgcn.com](http://ptgcn.com)

**This product is exclusively available under Proteintech Group brand and is not available to purchase from any other manufacturer.**

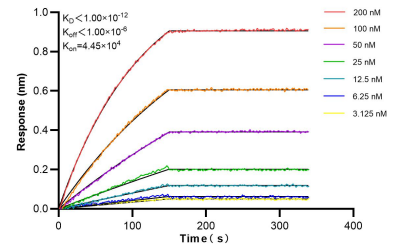
## Selected Validation Data



Various lysates were subjected to SDS PAGE followed by western blot with 86948-1-RR (Cathepsin S antibody) at dilution of 1:10000 incubated at room temperature for 1.5 hours. This data was developed using the same antibody clone with 86948-1-PBS in a different storage buffer formulation.



Immunofluorescent analysis of (4% PFA) fixed THP-1 cells using Cathepsin S antibody (86948-1-RR, Clone: 252053B3 ) at dilution of 1:200 and CoraLite® 488-Conjugated Goat Anti-Rabbit IgG(H+L) (SA00013-2). This data was developed using the same antibody clone with 86948-1-PBS in a different storage buffer formulation.



Bi-layer interferometry (BLI) kinetic assays of 86948-1-RR against Human Cathepsin S were performed. The affinity constant is below 1 pM.