

For Research Use Only

# Phospho-LYN (Tyr508) Recombinant monoclonal antibody

Catalog Number: 86947-2-RR



## Basic Information

Catalog Number:

86947-2-RR

Source:

Rabbit

Isotype:

IgG

GenBank Accession Number:

BC075002

GeneID (NCBI):

4067

UNIPROT ID:

P07948

Full Name:

v-src-1 Yamaguchi sarcoma viral related oncogene homolog

Calculated MW:

512 aa, 59 kDa

Observed MW:

53 kDa, 56 kDa

Purification Method:

Protein A purification

CloneNo.:

251104F11

Recommended Dilutions:

WB: 1:500-1:2000

## Applications

Tested Applications:

WB, ELISA

Species Specificity:

human

Positive Controls:

WB: Ramos cells,

## Background Information

LYN, also named as JTK8, p53Lyn and p56Lyn, belongs to the protein kinase superfamily, Tyr protein kinase family and SRC subfamily. The C-terminal tyrosine-508 residue (Tyr-508) in Lyn or the corresponding conserved tyrosine residue in each of the other members of the SFK family is the primary site for regulating tyrosine kinase activity by reversible phosphorylation. Phosphorylation at the tyrosine residue induces a closed conformation that is enzymatically inactive. (PMID: 33004926)

## Storage

Storage:

Store at -20°C. Stable for one year after shipment.

Storage Buffer:

PBS with 0.02% sodium azide and 50% glycerol, pH7.3

Aliquoting is unnecessary for -20°C storage

For technical support and original validation data for this product please contact:

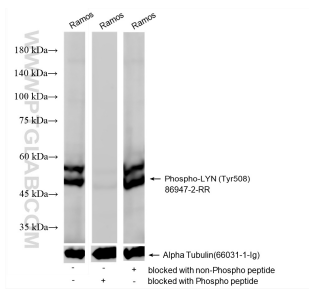
T: 4006900926

E: [Proteintech-CN@ptglab.com](mailto:Proteintech-CN@ptglab.com)

W: [ptgcn.com](http://ptgcn.com)

This product is exclusively available under Proteintech Group brand and is not available to purchase from any other manufacturer.

## Selected Validation Data



Ramos cell lysates were subjected to SDS PAGE followed by western blot with 80351-3-RR (Phospho-LYN (Tyr508)antibody) blocked with BSA only, Phospho-LYN (Tyr508) peptide or non-Phospho peptide at dilution of 1:1000 incubated at room temperature for 1.5 hours.