

For Research Use Only

# EMB Recombinant monoclonal antibody

Catalog Number: 86946-1-RR



## Basic Information

<b>Catalog Number:</b> 86946-1-RR	<b>GenBank Accession Number:</b> NM_198449.3	<b>Purification Method:</b> Protein A purification
<b>Source:</b> Rabbit	<b>GeneID (NCBI):</b> 133418	<b>CloneNo.:</b> 251953E3
<b>Isotype:</b> IgG	<b>UNIPROT ID:</b> Q6PCB8	<b>Recommended Dilutions:</b> WB: 1:1000-1:4000 IF/ICC: 1:50-1:500
<b>Immunogen Catalog Number:</b> EG6407	<b>Full Name:</b> embigin homolog (mouse)	
	<b>Calculated MW:</b> 37 kDa	
	<b>Observed MW:</b> 60-75 kDa	

## Applications

<b>Tested Applications:</b> WB, IF/ICC, ELISA	<b>Positive Controls:</b>
<b>Species Specificity:</b> human	<b>WB :</b> HEK-293T cells, Jurkat cells, MCF-7 cells, LNCaP cells <b>IF/ICC :</b> Jurkat cells,

## Background Information

EMB, also named as Embigin, is a 327 amino acid protein, which contains two Ig-like V-type (immunoglobulin-like) domains. EMB as a membrane protein may function as a regulator of cell/ECM interactions during development and in the homeostasis of normal adult tissues. EMB is a transmembrane glycoprotein with a protein component of 34 kDa, but western blot analysis of embigin in mouse soleus muscles detects a glycosylated full-length protein with an molecular mass of 70 kDa.(PMID: 19164284)

## Storage

**Storage:**  
Store at -20°C. Stable for one year after shipment.  
**Storage Buffer:**  
PBS with 0.02% sodium azide and 50% glycerol, pH7.3  
**Aliquoting is unnecessary for -20°C storage**

For technical support and original validation data for this product please contact:

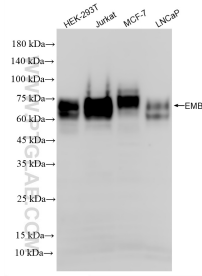
T: 4006900926

E: Proteintech-CN@ptglab.com

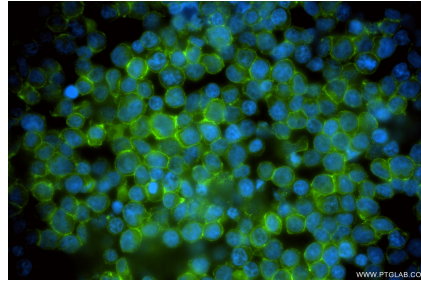
W: ptgcn.com

**This product is exclusively available under Proteintech Group brand and is not available to purchase from any other manufacturer.**

## Selected Validation Data



Various lysates were subjected to SDS PAGE followed by western blot with 86946-1-RR (EMB antibody) at dilution of 1:2000 incubated at room temperature for 1.5 hours.



Immunofluorescent analysis of (4% PFA) fixed Jurkat cells using EMB antibody (86946-1-RR, Clone: 25195E3) at dilution of 1:200 and CoraLite® 488-Conjugated Goat Anti-Rabbit IgG(H+L) (SA00013-2).