

For Research Use Only

EMB Recombinant monoclonal antibody, PBS Only (Capture)

Catalog Number: 86946-1-PBS



Basic Information

Catalog Number: 86946-1-PBS	GenBank Accession Number: NM_198449.3	Purification Method: Protein A purification
Source: Rabbit	GeneID (NCBI): 133418	CloneNo.: 251953E3
Isotype: IgG	UNIPROT ID: Q6PCB8	
Immunogen Catalog Number: EG6407	Full Name: embigin homolog (mouse)	
	Calculated MW: 37 kDa	
	Observed MW: 60-75 kDa	

Applications

Tested Applications:
WB, IF/ICC, Cytometric bead array, Indirect ELISA

Species Specificity:
human

Background Information

EMB, also named as Embigin, is a 327 amino acid protein, which contains two Ig-like V-type (immunoglobulin-like) domains. EMB as a membrane protein may function as a regulator of cell/ECM interactions during development and in the homeostasis of normal adult tissues. EMB is a transmembrane glycoprotein with a protein component of 34 kDa, but western blot analysis of embigin in mouse soleus muscles detects a glycosylated full-length protein with an molecular mass of 70 kDa. (PMID: 19164284)

Storage

Storage:
Store at -80°C.
The product is shipped with ice packs. Upon receipt, store it immediately at -80°C

Storage Buffer:
PBS only, pH7.3

For technical support and original validation data for this product please contact:

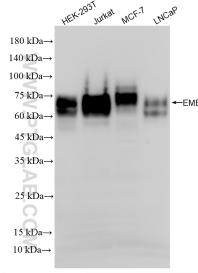
T: 4006900926

E: Proteintech-CN@ptglab.com

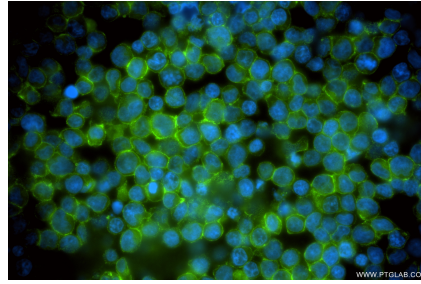
W: ptgcn.com

This product is exclusively available under Proteintech Group brand and is not available to purchase from any other manufacturer.

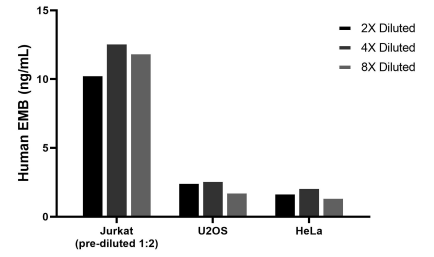
Selected Validation Data



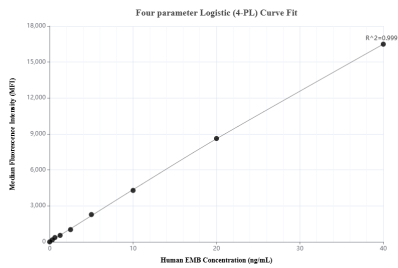
Various lysates were subjected to SDS PAGE followed by western blot with 86946-1-RR (EMB antibody) at dilution of 1:2000 incubated at room temperature for 1.5 hours. This data was developed using the same antibody clone with 86946-1-PBS in a different storage buffer formulation.



Immunofluorescent analysis of (4% PFA) fixed Jurkat cells using EMB antibody (86946-1-RR, Clone: 251953E3) at dilution of 1:200 and CoraLite® 488-Conjugated Goat Anti-Rabbit IgG(H+L) (SA00013-2). This data was developed using the same antibody clone with 86946-1-PBS in a different storage buffer formulation.



The mean EMB concentration was determined to be 11.7 ng/mL in Jurkat cell extract based on a 1.2 mg/mL extract load, 2.4 ng/mL in U2OS cell extract based on a 1.2 mg/mL extract load, 1.8 ng/mL in HeLa cell extract based on a 1.2 mg/mL extract load.



Cytometric bead array standard curve of MP02786-1, EMB Recombinant Matched Antibody Pair, PBS Only. Capture antibody: 86946-1-PBS. Detection antibody: 86946-2-PBS. Standard: Eg6407. Range: 0.312-40 ng/mL