

For Research Use Only

# PTPRF Recombinant monoclonal antibody, PBS Only (Detector)

Catalog Number: 86944-2-PBS



## Basic Information

Catalog Number:

86944-2-PBS

Source:

Rabbit

Isotype:

IgG

Immunogen Catalog Number:

EG6919

GenBank Accession Number:

NM\_002840.4

GeneID (NCBI):

5792

UNIPROT ID:

P10586-1

Full Name:

protein tyrosine phosphatase, receptor type, F

Calculated MW:

213 kDa

Purification Method:

Protein A purification

CloneNo.:

252028B7

## Applications

Tested Applications:

Cytometric bead array, Sandwich ELISA, Indirect ELISA

Species Specificity:

human

## Background Information

### Storage

Storage:

Store at -80°C.

**The product is shipped with ice packs. Upon receipt, store it immediately at -80°C**

Storage Buffer:

PBS only, pH7.3

For technical support and original validation data for this product please contact:

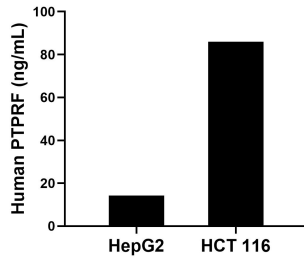
T: 4006900926

E: [Proteintech-CN@ptglab.com](mailto:Proteintech-CN@ptglab.com)

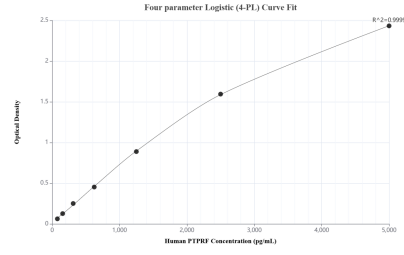
W: [ptgcn.com](http://ptgcn.com)

**This product is exclusively available under Proteintech Group brand and is not available to purchase from any other manufacturer.**

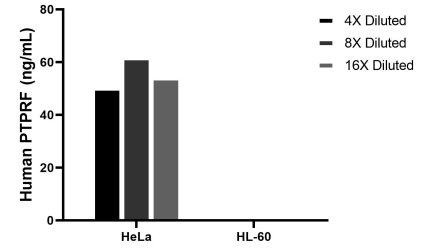
## Selected Validation Data



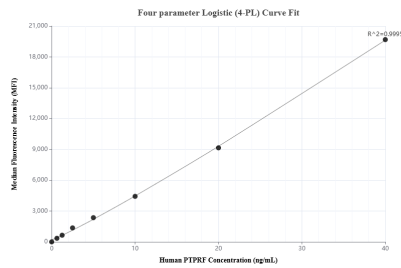
The mean PTPRF concentration was determined to be 14.2 ng/mL in HepG2 cell extract based on a 1.2 mg/mL extract load and 85.9 ng/mL in HCT 116 cell extract based on a 1.3 mg/mL extract load.



Sandwich ELISA standard curve of MP02791-1, Human PTPRF Recombinant Matched Antibody Pair - PBS only. 86944-1-PBS was coated to a plate as the capture antibody and incubated with serial dilutions of standard Eg6919. 86944-2-PBS was HRP conjugated as the detection antibody. Range: 78.1-5000 pg/mL



The mean PTPRF concentration was determined to be 55.3 ng/mL in HeLa cell extract based on a 1.2 mg/mL extract load, HL-60 cell extract were served as a negative control.



Cytometric bead array standard curve of MP02791-1, PTPRF Recombinant Matched Antibody Pair, PBS Only. Capture antibody: 86944-1-PBS. Detection antibody: 86944-2-PBS. Standard: Eg6919. Range: 0.625-40 ng/mL