

For Research Use Only

# TOMM40L Recombinant monoclonal antibody, PBS Only

Catalog Number: 86943-1-PBS



## Basic Information

Catalog Number:

86943-1-PBS

Source:

Rabbit

Isotype:

IgG

Immunogen Catalog Number:

AG9401

GenBank Accession Number:

BC014946

GeneID (NCBI):

84134

UNIPROT ID:

Q969M1

Full Name:

translocase of outer mitochondrial membrane 40 homolog (yeast)-like

Calculated MW:

308 aa, 34 kDa

Observed MW:

33-38 kDa

Purification Method:

Protein A purification

CloneNo.:

251895B2

## Applications

Tested Applications:

WB, Indirect ELISA

Species Specificity:

human, mouse, rat

## Background Information

TOMM40L (Mitochondrial import receptor subunit TOM40B) is a potential channel-forming protein implicated in the import of protein precursors into mitochondria.

## Storage

Storage:

Store at -80°C.

**The product is shipped with ice packs. Upon receipt, store it immediately at -80°C**

Storage Buffer:

PBS only, pH7.3

For technical support and original validation data for this product please contact:

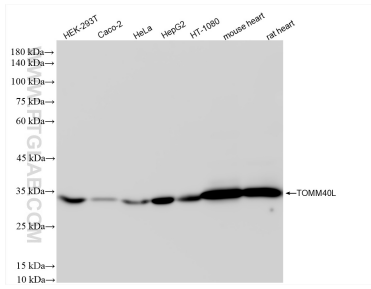
T: 4006900926

E: [Proteintech-CN@ptglab.com](mailto:Proteintech-CN@ptglab.com)

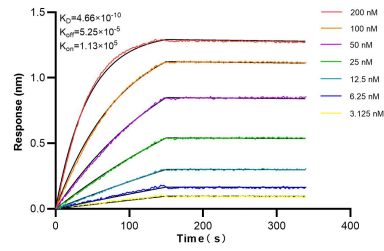
W: [ptgcn.com](http://ptgcn.com)

**This product is exclusively available under Proteintech Group brand and is not available to purchase from any other manufacturer.**

## Selected Validation Data



Various lysates were subjected to SDS PAGE followed by western blot with 86943-1-RR (TOMM40L antibody) at dilution of 1:3000 incubated at room temperature for 1.5 hours. This data was developed using the same antibody clone with 86943-1-PBS in a different storage buffer formulation.



Biolayer interferometry (BLI) kinetic assays of 86943-1-RR against Human TOMM40L were performed. The affinity constant is 0.466 nM.