

For Research Use Only

IGJ Recombinant monoclonal antibody, PBS Only (Capture)

Catalog Number: 86939-6-PBS



Basic Information

Catalog Number:

86939-6-PBS

Source:

Rabbit

Isotype:

IgG

Immunogen Catalog Number:

AG4559

GenBank Accession Number:

BC038982

GeneID (NCBI):

3512

UNIPROT ID:

P01591

Full Name:

immunoglobulin J polypeptide, linker
protein for immunoglobulin alpha
and mu polypeptides

Calculated MW:

158 aa, 18 kDa

Purification Method:

Protein A purification

CloneNo.:

251691A6

Applications

Tested Applications:

Sandwich ELISA, Indirect ELISA

Species Specificity:

human

Background Information

Storage

Storage:

Store at -80°C.

The product is shipped with ice packs. Upon receipt, store it immediately at -80°C

Storage Buffer:

PBS only, pH7.3

For technical support and original validation data for this product please contact:

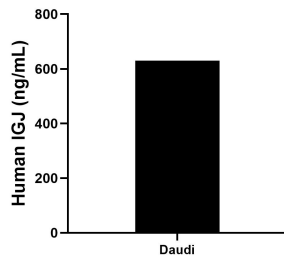
T: 4006900926

E: Proteintech-CN@ptglab.com

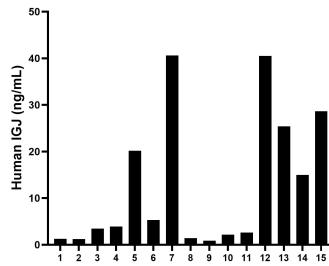
W: ptgcn.com

This product is exclusively available under Proteintech Group brand and is not available to purchase from any other manufacturer.

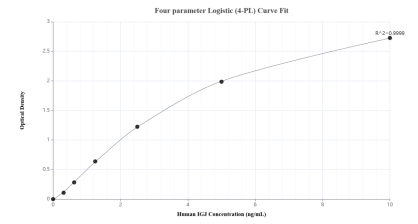
Selected Validation Data



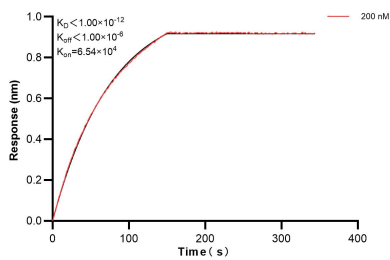
The mean IGJ concentration was determined to be 630.09 ng/mL in Daudi cell extract based on a 1.10 mg/mL extract load.



Serum of fifteen individual healthy human donors was measured. The IGJ concentration of detected samples was determined to be 12.84 ng/mL with a range of 0.85-40.61 ng/mL.



Sandwich ELISA standard curve of MP02790-2, Human IGJ Recombinant Matched Antibody Pair - PBS only. 86939-6-PBS was coated to a plate as the capture antibody and incubated with serial dilutions of standard Ag4559. 86939-5-PBS was HRP conjugated as the detection antibody. Range: 0.313-10 ng/mL



Biolayer interferometry (BLI) kinetic assay of 86939-6-PBS against Human IGJ was performed. The affinity constant is below 1 pM.