

For Research Use Only

# IGJ Recombinant monoclonal antibody, PBS Only (Capture)

Catalog Number: 86939-3-PBS



## Basic Information

Catalog Number:

86939-3-PBS

Source:

Rabbit

Isotype:

IgG

Immunogen Catalog Number:

AG4559

GenBank Accession Number:

BC038982

GeneID (NCBI):

3512

UNIPROT ID:

P01591

Full Name:

immunoglobulin J polypeptide, linker  
protein for immunoglobulin alpha  
and mu polypeptides

Calculated MW:

158 aa, 18 kDa

Purification Method:

Protein A purification

CloneNo.:

251691B4

## Applications

Tested Applications:

Cytometric bead array, Indirect ELISA

Species Specificity:

human

## Background Information

### Storage

Storage:

Store at -80°C.

**The product is shipped with ice packs. Upon receipt, store it immediately at -80°C**

Storage Buffer:

PBS only, pH7.3

For technical support and original validation data for this product please contact:

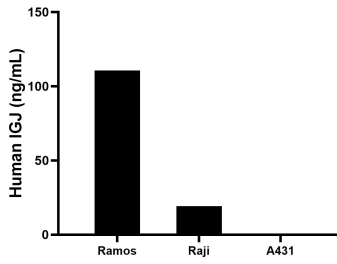
T: 4006900926

E: [Proteintech-CN@ptglab.com](mailto:Proteintech-CN@ptglab.com)

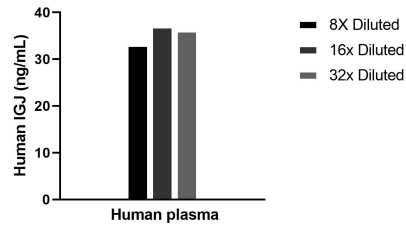
W: [ptgcn.com](http://ptgcn.com)

**This product is exclusively available under Proteintech Group brand and is not available to purchase from any other manufacturer.**

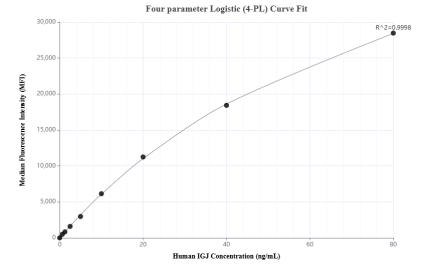
## Selected Validation Data



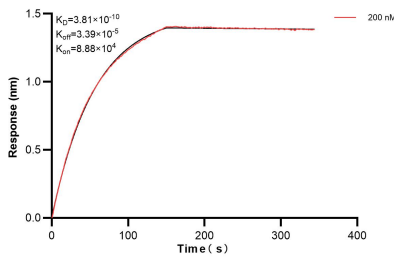
The mean IGJ concentration was determined to be 110.7 ng/mL in Ramos cell extract based on a 1.2 mg/mL extract load, 19.3 ng/mL in Raji cell extract based on a 1.2 mg/mL extract load, A431 cell extract were served as a negative control.



The mean IGJ concentration was determined to be 35.4 ng/mL in human plasma.



Cytometric bead array standard curve of MP02790-1, IGJ Recombinant Matched Antibody Pair, PBS Only. Capture antibody: 86939-3-PBS. Detection antibody: 86939-2-PBS. Standard: Ag4559. Range: 0.625-80 ng/mL.



Biolayer interferometry (BLI) kinetic assay of 86939-3-PBS against Human IGJ were performed. The affinity constant is 0.381 nM.