

For Research Use Only

IgJ Recombinant monoclonal antibody, PBS Only

Catalog Number: 86939-1-PBS



Basic Information

Catalog Number:

86939-1-PBS

Source:

Rabbit

Isotype:

IgG

Immunogen Catalog Number:

AG4559

GenBank Accession Number:

BC038982

GeneID (NCBI):

3512

UNIPROT ID:

P01591

Full Name:

immunoglobulin J polypeptide, linker
protein for immunoglobulin alpha
and mu polypeptides

Calculated MW:

158 aa, 18 kDa

Observed MW:

25 kDa

Purification Method:

Protein A purification

CloneNo.:

251691G5

Applications

Tested Applications:

WB, IF/ICC, Indirect ELISA

Species Specificity:

human

Background Information

IgJ, the immunoglobulin J chain, serves to link two monomer units of either IgM or IgA.

Storage

Storage:

Store at -80°C.

The product is shipped with ice packs. Upon receipt, store it immediately at -80°C

Storage Buffer:

PBS only, pH7.3

For technical support and original validation data for this product please contact:

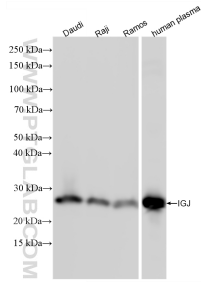
T: 4006900926

E: Proteintech-CN@ptglab.com

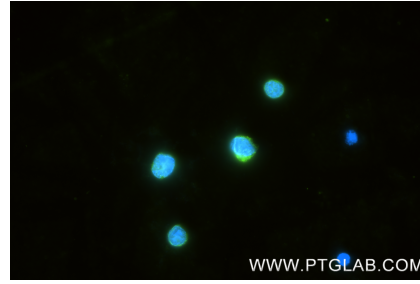
W: ptgcn.com

This product is exclusively available under Proteintech Group brand and is not available to purchase from any other manufacturer.

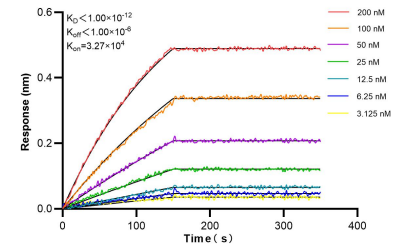
Selected Validation Data



Various lysates were subjected to SDS PAGE followed by western blot with 86939-1-RR (IGJ antibody) at dilution of 1:10000 incubated at room temperature for 1.5 hours. This data was developed using the same antibody clone with 86939-1-PBS in a different storage buffer formulation.



Immunofluorescent analysis of (4% PFA) fixed Ramos cells using IGJ antibody (86939-1-RR, Clone: 251691G5) at dilution of 1:200 and CoraLite® 488-Conjugated Goat Anti-Rabbit IgG(H+L) (SA00013-2). This data was developed using the same antibody clone with 86939-1-PBS in a different storage buffer formulation.



Bi-layer interferometry (BLI) kinetic assays of 86939-1-RR against Human IGJ were performed. The affinity constant is below 1 pM.