

For Research Use Only

# CLDN17 Recombinant monoclonal antibody

Catalog Number:86936-1-RR



## Basic Information

Catalog Number:

86936-1-RR

Source:

Rabbit

Isotype:

IgG

GenBank Accession Number:

BC101503

GeneID (NCBI):

26285

UNIPROT ID:

P56750

Full Name:

claudin 17

Calculated MW:

224 aa, 25 kDa

Observed MW:

27 kDa

Purification Method:

Protein A purification

CloneNo.:

251114D9

Recommended Dilutions:

WB: 1:2000-1:10000

## Applications

Tested Applications:

WB, ELISA

Species Specificity:

human

Positive Controls:

WB : HL-60 cells, HEK-293T cells

## Background Information

CLDN17 (Claudin-17) is a 27-kDa tetra-transmembrane protein belonging to the claudin family of tight-junction components. It forms paracellular ion-selective pores and is predominantly expressed in renal proximal tubule epithelium, gastrointestinal tract, and lung alveolar epithelium, where it contributes to Na<sup>+</sup>/Cl<sup>-</sup> permeability and acid-base homeostasis.

## Storage

Storage:

Store at -20°C. Stable for one year after shipment.

Storage Buffer:

PBS with 0.02% sodium azide and 50% glycerol, pH7.3

Aliquoting is unnecessary for -20°C storage

For technical support and original validation data for this product please contact:

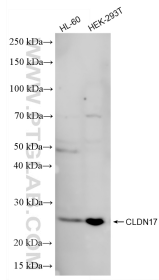
T: 4006900926

E: [Proteintech-CN@ptglab.com](mailto:Proteintech-CN@ptglab.com)

W: [ptgcn.com](http://ptgcn.com)

**This product is exclusively available under Proteintech Group brand and is not available to purchase from any other manufacturer.**

## Selected Validation Data



Various lysates were subjected to SDS PAGE followed by western blot with 86936-1-RR (CLDN17 antibody) at dilution of 1:5000 incubated at room temperature for 1.5 hours.